

FIRST GIRL'S UNIVERSITY OF NORTHERN INDIA



ETERNAL UNIVERSITY

BARU SAHIB (HIMACHAL PRADESH)
NAAC ACCREDITED

World Peace Through Value Based Education

PROSPECTUS
2023-24



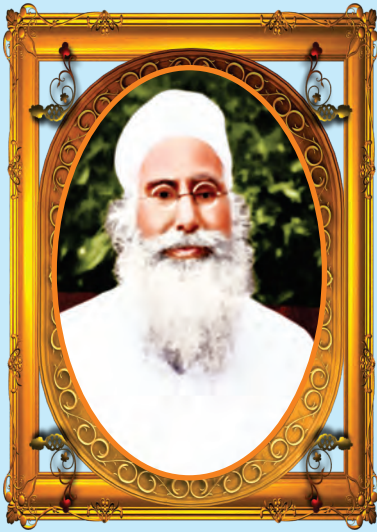
IMPORTANT

Any dispute arising of anything connected with the Eternal University and its activities including admissions/operation of semester rules will be subject to jurisdiction of the Courts situated at Rajgarh, Sirmaur (H.P.)

DISCLAIMER

The Statements made in the Prospectus and all Information contained herein are believed to be correct at the time of its publication. However, the University reserves the right to make changes and additions to the regulations, conditions governing the conduct of students, requirements for degree or diploma, fee at any time, without notice. No responsibility will be accepted by the University for hardship or expenses incurred by its students or any other person or persons for such changes, additions, omissions, or errors; no matter how they are caused.

Printed and Published by Eternal University, Baru Sahib, Himachal Pradesh



Sant Attar Singh Ji
1866-1927



Sant Teja Singh Ji
1877-1965



Shiromani Panth Rattan,
Himachal Gaurav Padmashri
Baba Iqbal Singh Ji
1926-2022

The great visionaries had a vision that modern scientific education alone will not serve the humanity well, unless it is amalgamated with Braham Vidya (Spiritual Education). They have served the society in multifarious ways for the upliftment of rural masses especially the women.

OUR MISSION

To Establish Permanent Peace in the World Through Value Based Scientific Education, Spiritual Rejuvenation and Women Empowerment

AWARD



We are happy to share the proud moment that the Chancellor of Eternal University and President of The Kalgidhar Trust, Baru Sahib, Shiromani Panth Ratan Baba Iqbal Singh Ji has been conferred Padma Shri award for his social work by the Government of India. The nonagenarian educationist, social worker and philanthropist Baba Iqbal Singh Ji has been doing yeoman's service for the betterment of society.

AWARD



We are honoured to share with you that Dr. Neelam Kaur- Dean Faculty of Education & Health Sciences, Eternal University Baru Sahib has been conferred with the prestigious 'Excellence in School Education Award' in 2019 by the House of Commons, British Parliament, London (UK) and in 2022 by the Republic of Mauritius for her contribution and dedicated services in the field of education and women empowerment in Himachal Pradesh, Punjab, Haryana, Rajasthan, and Uttar Pradesh.

ABOUT THE CHANCELLOR



Dr Davinder Singh - President, The Kalgidhar Trust as well as the Chancellor of the Eternal University has been featured in the 11th edition of The Sikh 100 the annual list of the most powerful, influential, and contemporary Sikhs in the world. Dr. Singh has been placed at number 12 among the 100 individuals selected for the list. In 2022 His work and achievements have been recognized by the forum making Him one of the top social workers felicitated for their significant contributions to society.

This recognition reflects the impact and positive change he has brought to the lives of individuals and communities through his dedicated efforts.

The Sikh 100 is an annual publication that profiles 100 of the most powerful and influential Contemporary individuals out of 27 million Sikhs worldwide. It traverses all sectors, including business, education, politics, media, entertainment, sport, and charity.

VICE-CHANCELLOR'S MESSAGE



Dr. Davinder Singh
M.D. & M.B.B.S.
(Delhi University)

The Eternal University, Baru Sahib is the visual manifestation of the divine vision of Sant Attar Singh Ji, who had envisioned 100 years ago of this seat of higher learning. The vision statement enunciated by the divine master 10 decades ago, objectified creation of outstanding human beings who could spread the message of love and spiritual brotherhood not only in this country, but the entire world. 'Sanskar Nirman' is the 'Mantra' which the founding fathers had proposed to be the foundation on which the educational edifice of this institution was to rest. This women's university is ensconced in the captivating Divine Baru Valley with deep woods and fresh water springs making the ambience conducive for spiritual rejuvenation.

The campus, with its beautiful diversity of students from all over the country, provides ample opportunity to young girls to express themselves uninhibitedly and evolve into outstanding human beings who have nerves of steel and at the same time possess unlimited patience, forbearance, tolerance and love for the entire humanity.

PRO-VICE-CHANCELLOR'S MESSAGE

Dr. A.S. Ahluwalia

Ph.D. (BHU)

Former Dean of Sciences (PU)



The Eternal University, Baru Sahib, established by Himachal Pradesh Government by Act No. 3 of 2009, has been accredited by NAAC and duly recognized by the UGC, AICTE, INC, NCTE, DST and DBT is presently one of the only exclusively girl's university in Himachal Pradesh. In August 2022, the University has achieved another milestone in getting ICAR Accreditation for B.Sc. (Hons.) Agriculture four-year degree programme.

The Eternal University is offering nearly 70 academic degree programmes from UG to Ph.D. levels in Basic Sciences, Agriculture, Food Technology, Biotechnology, Engineering and Technology, Economics, Commerce and Management, Education, Psychology, Nursing and Public Health and Divine Music through its seven constituent colleges with the value-based education by the highly competent, dedicated and experienced faculty with state-of-the-art facilities and infrastructure.

Situated in the valley of Divine Peace Baru Sahib, the campus is providing safest, drug and pollution free environment and support for holistic development of its girl students. In an exclusively residential campus, many girl students from nearby areas of Sirmour district are pursuing their studies in the Eternal University. You are cordially invited to visit our campus and the website for your support and association with us for pursuit of knowledge, quality education & skills and for treading the university to its academic excellence.

MESSAGE

ਸੋ ਕਿਉ ਮੰਦਾ ਆਖੀਐ ਜਿਤੁ ਜੰਮਹਿ ਰਾਜਾਨ ॥



Dr. Neelam Kaur,
MBBS, MS (Ophthalmology)
Akal University & Eternal University
The Kalgidhar Trust

Girl child, her equal status in the society and her education has been very close to the heart of our founding saints. In 1906, first educational institute for girls was established by Sant Attar Singh ji Maharaj in remote village of Mastuana in the district of Sangrur Punjab

Taking the legacy forward Hon Saint Baba Iqbal Singh ji resonated with same grit and devotional perseverance to educate girl child and empower her to become woman of substance with impeccable character who will shape the destiny of her family and progeny.

The world today needs these young women of intellect with all goodness of heart and soul to create peaceful and soulful tomorrow for future generations

We, at Eternal University weave landscape of professional competency and perfectly blend with innate virtues embedded deep within to carve better humanity who will become world leaders tomorrow. These young women will face the global challenges with their incisive vision and deep commitment to use the knowledge gained for higher purpose to alleviate suffering of mankind and spread the message of spiritual brotherhood and eternal peace as enunciated by Guru Nanak Dev Ji Maharaj

Awaken and Shine!

This world needs such evolved women

Eternal is your journey

CONTENTS

Sr. No.	Chapter	Page No.
1	About the University & its Constituent Colleges	01
2	University Infrastructure and Facilities	22
3	Academic Programmes, Seats Allocation and Eligibility Criteria	29
4	Approved Tuition Fee	36
5	Faculty of Colleges	39
6	Training and Placement	44
7	Eternal University Alumni Association and Official Contact Numbers	45
8	Instructions/Regulations Regarding Ragging	46
9	Medals and Scholarships	49
10	Interconversion of OCPA and Aggregate Percentage	51
11	Charges for various types of Certificates	52
12	Academic and Sports Calendars	53
13	Testimonials	58
14	MoUs with Other Institutions	62
15	Admission Procedure	63
16	Affidavits/ Undertaking /Admission Forms	65

ABOUT THE UNIVERSITY AND ITS CONSTITUENT COLLEGES

ETERNAL UNIVERSITY

The University came into existence with the visionary grace of most revered Padma Shri awardee Sant Baba Iqbal Singh Ji, former Director Agriculture, Himachal Pradesh, President Kalgidhar Trust, former Hon'ble Chancellor, Eternal University, Baru Sahib and above all the social reformer of rural women in general and hill women in particular. According to his belief "modern scientific education alone may not serve the humanity well, unless it is amalgamated with spiritual education". Throughout his journey, he could effectively translate the visions of Sant Baba Attar Singh Ji (Mastuana wale) and Sant Baba Teja Singh Ji by establishing the first Akal Academy in 1986 at Baru Sahib. Later, it spread to a network of 129 CBSE affiliated Akal Academies over six states and two Universities to impart value-based education from nursery to Doctorate level. As part of the vision, prophesy and prayers of the visionary Saints, Eternal University was established under the Himachal Pradesh Government Act No. 3 of 2009 which has been recognized by UGC, AICTE, INC, NCTE, DSIR, DBT, DST & DRDO and accredited by NAAC. The B.Sc. (Hons.) Ag. Four-year degree programme has also been Accredited by ICAR, New Delhi for five years from 2022 to 2027. The graduates of this unique education system are not only outstanding in academics, but also carry high moral values. They have love for humanity, compassion for the weak and the poor and sense of selfless service for the community.

Akal College of Nursing is the first nursing college established in the year 2008 by the 'Kalgidhar Trust', in the valley of divine peace 'Baru Sahib' situated in the shadows of the great Himalayas in the Northern part of India the well-known land of Gods and Goddess, thus called "Dev-Bhoomi" Himachal Pradesh. Akal College of Nursing was also accredited by Indian Nursing Council, New Delhi vide Resolution No. 138/02/August/2008 of dated 14th October 2008 & approved by H.P. Registration Council. The Akal College of Nursing offers B.Sc. Nursing, M.Sc. Nursing and Ph.D. Nursing courses approved/ affiliated by Himachal Pradesh Nursing Registration Council (HPNRC) and Indian Nursing Council (INC). Similarly, Eternal University is the first private university of Himachal Pradesh to start College of Agriculture in 2014 to admit 60 girl students. The lush green and pollution free campus in Himachal Pradesh is fully residential for faculty and students with all the basic facilities for comfortable living, excellent academic career pursuit and participation in co-curricular and spiritual activities for their holistic development. It has now been transformed and

recognized as a modern Gurukul exclusively for girls' education. The Eternal University has been regularly organizing conferences, symposia, workshops, Kisan Melas, Annual Sports meets and celebrating national and international days, conducting Faculty Development Programmes (FDPs) and creating opportunities for student's awareness with the latest developments in the areas of their interest and confidence to share their knowledge with other faculty, students and stake holders. For the people of district Sirmour being one of the most backward districts of Himachal Pradesh, the establishment of Eternal University, Baru Sahib has proved to be a boon with many hopes as well as expectations for addressing their problems related to education, health, nutrition, agricultural production, skill development, employment and women empowerment. for their inclusive development. After its establishment in the year 2009, with a mission and mandate of value-based education and women empowerment, the university has demonstrated its commitment to society through great impact in teaching, research and transfer of technology. It is continuously looking forward to set new dimensions in the research area of modern agriculture, food technology, biotechnology, public health, basic sciences, social sciences and renewable energy with teams of world class scientists and external funding support from different funding agencies of Government of India and Himachal Pradesh.

CONSTITUENT COLLEGES

The Eternal University has the following seven constituent colleges:

1. Dr. Khem Singh Gill Akal College of Agriculture
2. Akal College of Arts and Social Sciences
3. Akal College of Basic Sciences
4. Akal College of Economics, Commerce & Management
5. Akal College of Education
6. Akal College of Engineering and Technology
7. Akal College of Health and Allied Sciences

Dr. KHEM SINGH GILL AKAL COLLEGE OF AGRICULTURE

Dr. Khem Singh Gill Akal College of Agriculture (erstwhile Akal College of Agriculture) was established during year 2014 as a constituent college of Eternal University by the Kalgidhar Trust at Baru Sahib with the basic objective of providing quality education at undergraduate and postgraduate levels for the girl students in the field of Agricultural Sciences. At present the college is offering 02 undergraduate degree programmes such as B.Sc. (Hons.) Agriculture and B.Tech. Food Technology, 11 post graduate degree programmes, that is, M.Sc. Ag. Agronomy, M.Sc. Ag. (Agricultural Economics), M.Sc. Horticulture (Vegetable Science), M.Sc. Horticulture (Fruit science), M.Sc. Horticulture (Floriculture and Landscape Architecture), M.Sc. Ag. Plant Pathology, M.Sc. Ag. Entomology, M.Sc. Ag. Genetics and Plant Breeding, M.Sc. Biotechnology, M.Tech. Food Technology and M.Sc. Food Science and Technology and 06 Ph.D. degree programmes that is Ph.D. Horticulture (Vegetable Science), Ph.D. Agronomy, Ph.D. Entomology, Ph.D. Biotechnology, Ph.D. Food Technology and Ph.D. Genetics and Plant Breeding.

The college has developed elite plant breeding material pertaining to bio fortified wheat with high iron and zinc contents in grains, improved bread making quality and maize lines with high quality protein having high lysine and tryptophan amino acids, functional foods such as fox tail millet, finger millet, buck wheat, amaranth, soybean, oats and barley. Production technology of tomato, capsicum and strawberry under protected conditions has been standardized.

Organization of Kisan Mela at the time of Baisakhi in April month is a regular activity of the college to showcase its technology to the local farmers. Educational Tours within and outside the state to B.Sc. (Hons.) Agriculture students in their 3rd year or 4th year of studies is a regular feature of their course curriculum for their better know-how.

ACHIEVEMENTS

The major achievement of the college during 2022-23 is the Accreditation of its B.Sc. (Hons.) Agriculture degree programme from National Agricultural Educational Accreditation Board, ICAR-New Delhi for a period of five years i.e., 19.07.2022 to 18.07.2027. This is the first private college in Himachal Pradesh to get this recognition.

INFRASTRUCTURE

The college has been continuously improving its infrastructure facilities to excel its teaching, research and extension activities. At present there is one Honorary Professor Biotechnology, one Adjunct Professor Agronomy, one Professor Horticulture, two Associate Professors, twenty Assistant Professors and two Teaching Associates in the college.

College has established nine departments i.e., Agronomy, Agricultural Economics, Entomology, Plant Pathology, Genetics Plant Breeding and Biotechnology, Horticulture

(Vegetable Science, Fruit Science and Floriculture and Landscape Architecture), Food Technology, Soil Science and Agricultural Chemistry and Agricultural Extension and Communication. The college has also established three sections i.e., Agricultural Engineering, Animal Sciences and Bio Chemistry and Crop Physiology. The college has established Akal Food Safety and Quality Control Laboratory with a financial support of Rs. 5.98 crores from Ministry of Food Processing and Industries, Government of India New Delhi to cater the needs of students and farmers with facilities like GCMS/MS, LCMS/MS, FTIR, DSC, ICPOES, UV-Vis. Spectrophotometer, Chromometer, Refractometer and HPLC. College has four food processing pilot plants with bakery unit and five smart class rooms.

The college has established Museum, committee room with video conferencing facility, and evaluation room. The college has its own weather station to carry out students' needs and forecasting weather parameters. The weather data is being displayed daily in the LCD screen fixed near the main entrance gate of the university.

All the departments have well equipped laboratories with requisite instrumentation and the sophisticated equipment which include, Atomic Absorption Spectrophotometer (Varian), Thermocyclers (ABI), Crude Fibre Analyzer, Gel Documentation System (Syngene), Vis/UV-Vis Spectrophotometers, Freeze Dryer (Martin Christ), Gel electrophoresis assemblies, Water Purification Assemblies, Microwave Digestion Oven (Anton Parr), Deep Freezers (Thermo), Laminar Air Flow Cabinets, Biosafety cabinet, CO₂ incubators, Fluorescent Microscope, Dark-field microscope, Food Extruder, Incubator Shaker, Fruit/Vegetable Crusher/Pulper/Juicer, Autoclaves, Multipurpose centrifuges, BOD incubators, colony counter and several other major as well as minor equipment for necessary research and teaching work.

The college has been able to get 12 externally funded research projects (including two from MoFPI, one from WOSA-DST, two from Department of Environment, Science and Technology, Shimla, one from GIZ, one from DST, two from DBT, GOI projects and 03 from UBA) with a funding of more than Rs. 3.25 crores. Several other projects submitted for external funding are under active consideration. The student fellowships are available in the college in the form of university doctoral fellowship and other from the funding agencies.

The college has four Research Stations located at Kakhli, Machher, Chhapang and Machlog to cater the needs of M.Sc. / Ph.D. students, research trials and external funding agencies research projects. At Research Station Kakhli crop cafeteria respect to Vegetable Science, Fruit Science and Floriculture have been established. Fields to students to carry out Rural Agricultural Work Experience have been allotted. The M.Sc. students of Department of Agronomy, Plant Breeding and Genetics, Floriculture and Landscape Architecture and Fruit Science are conducting their field trials in this station. Department of Food Technology has been allotted the area to produce fodder for the cattle. A fruit orchard having 400 plants has been established. Vermi-compost unit has been established at this station to give practical training to students and farmers. The college has also established a dairy comprising six cows at this station.

The research activities pertaining to M.Sc. /Ph.D. students of Department of Agronomy,

Genetics Plant Breeding and Biotechnology are being carried out at Research Station Machher. A Bee Keeping Unit having 25 beehives boxes has also been established at this station to meet the needs of practical training of B.Sc. (Hons.) Agriculture students and farmers training programmes. A Mushroom Production Unit has also been established for providing practical training to B.Sc. (Hons.) Agriculture students.

At Research Station Chappang, research work is concentrated on protected cultivation of vegetable crops. M.Sc. students of Vegetable Science and Fruit Science are conducting their trials at this station. There are four polyhouses having a dimension of 25-meter length, 20-meter width and 15-meter height each. At Research Station Machlog germplasm of Fruit Crops pertaining to temperate and sub-tropical fruit crops is being maintained.

KEY HIGHLIGHTS OF THE COLLEGE

The college is running **12 external funding projects got funded from** different govt. agencies like: department of Science & technology (DST), Department of Biotechnology (DBT), Department of Environmental Science & Technology (HPDEST), Science and Engineering Research Board-DST (SERB-DST), Ministry of Food Processing Industries (MoFPI), German Agency for International Cooperation (GIZ), Unnat Bharat Abhiyan (UBA) etc. up to 3.25 crores.

- The **Centre of Excellence** has been established recently under the college to facilitate employment/entrepreneurship among the passing out EU students. The entrepreneurship development Initiative aims to provide aspiring entrepreneurs with the necessary support and resources to nurture their entrepreneurial spirit. Through this program, participants will have access to a comprehensive range of activities and opportunities designed to foster their growth and success.

- The "*EU Incubation center*" is coordinating with the Govt. of Himachal Pradesh to help educated youth from the state, who are currently looking for work become job creators, assist startup and innovative initiatives in the state, and provide young people and potential investors with the skills necessary to launch their own businesses. The salient features of EU Incubator Center are as follow:

- i. To promote new ideas/products and processes suitable for commercialization through startups.
- ii. Self-employment/employment generation and income generation.
- iii. To provide one year mentorship with a fellowship under the Incubator Scheme of Government.

- iv. Handhold new enterprises and entrepreneurs.

- v. Facilitate startups and Innovation Projects

- **Student and Technology Exchange Programs** with Copenhagen Business School is one of the top public universities in Frederiksberg, Denmark, which ranked 94 in QS World University Ranking (2023). This will help them to excel their expertise and provide opportunities to students to enhance their knowledge with the topmost scientist from their respective fields.

- **Self Help Groups Training Program Sponsored by Department of Agriculture, Govt. of H.P.** New initiative taken by the DKSG ACA, Eternal University in collaboration with Department of Agriculture, Govt. of Himachal Pradesh; to enhance the socioeconomic status of farmers,

entrepreneurs, FPOs and SHGs to increase their income and capture more of the value of their product in the value chain. Under this pilot project training will be provide for farmers entrepreneur, FPOs and SHGs communities to commercialize their crops by making value added products and latest technology; which will give rise employment for farmers; reduce their crops losses and improve their economic strength. Features of EU Incubator center are followings:

- i. Sustainable livelihood enhancement through value addition and cost-effective technology.
- ii. More prize realization on the products.
- iii. Waste minimization of fruits/vegetables crops.
- iv. Income generation of small land holding farmers and small retailers.
- v. Employment for local farmers, entrepreneur, FPOs and SHGs of different districts of Himachal Pradesh.

PHOTOS SHOWING THE ACTIVITIES OF THE COLLEGE



Honourable Vice Chancellor welcoming Chairperson Peer Review Team ICAR



Peer Review Team Members interacting with university officers and students



Group photograph with farmers in a training camp



Students in the practical class



A view of the college Museum



Chief Guest Kisan Mela interacting with Dean, Dr. Khem Singh Gill Akal College of Agriculture

AKAL COLLEGE OF ARTS & SOCIAL SCIENCES

Akal College of Arts and Social Sciences is an entity within the University which includes programmes and faculty in music, social sciences, and other disciplines. The College is known for its broad range of majors and interdisciplinary programmes. The faculty of ACA&SS pride themselves on high quality teaching and deep commitment to students' success. Courses running in the college are built on a strong foundation with wide variety of successful career paths. The College has the following six departments:

- Department of Music
- Department of English and Communication Studies
- Department of Psychology
- Department of Punjabi
- Department of Education
- Department of Library & Information Science

INFRASTRUCTURE

Department of Music: The students of this department are endowed with modern infra and convenient amenities that make their life comfortable in college hours making learning more interesting. Some of the facilities include well-ventilated classrooms, recreational areas and a spacious performance hall. The Department of Music provides to its students an opportunity with a rare combination of learning Divine Music, along with ancient Indian string instruments. Department has very wide and unique range of Music Instruments such as Harmonium, Tabla, Sitar, Sarangi (for DhadhiVaar), Sarangi (Classical), Veena, Dhrupadi Rabab, Afgani Rabab, Guitar, Taaus, Dilruba, Taar-Shehnai, Saranda; Sur-Mandal, Violin, Dhol, Taanpura, Dholaki, Pakhawaj, Synthesizer, Benjo, Ehru (Mangolian instrument), Electronic Tanpura, Electronic Tabla, Electronic Lehra, Nal- Tarang, Sarod, Mendolin (European Folk Instrument), Drain (Tibbati Instrument), Dhatam (South Indian Instrument) and Santoor (Kashmiri Instrument). These instruments make the students well groomed, more confident of one's abilities and are of immense help to them while seeking employment in Music.

Instructions and practical training are imparted by well- qualified and experienced faculty. Students from this Department regularly perform live with variety of string instruments for Shabad-Kirtan presentation, at various National & International locations. More than 150 performances are being done by the students of Department of Music from August 1, 2019 to date across the country.

Department of English and Communication Studies: Dedicated to the study of English and communication, the department was established to conduct advanced research and training in English and in the areas of Teacher Education, Literature, Linguistics, Interdisciplinary and Cultural Studies and to develop critical intercultural understanding of civilizations. The Department trains its students in humanist traditions with emphasis on intellectual tolerance. It strives to provide a rich field of literary and linguistic creativity to its students. One of the stated aims of the department has been the development of literary and critical perception in the students which should ultimately enable them to place the major literary works of the world in a proper literary perspective. The Department has a Language Lab which is designed to enhance students' language skills, communication skills, vocabulary, listening skills, pronunciation and accuracy while eliminating Multiple Tone Interference. English Lab is fully computerized with client server application and has an easy-to-use console displayed on the desktop of the server to facilitate the faculty to conduct the course. Students are able to access the courseware through client systems.

Department of Psychology: The Department of Psychology was established in 2016 and running the programme of B.Sc. (Hons.) Psychology, M.Sc. and Ph.D. in Psychology. The purpose to establish the

department was to equip the students with knowledge, skills and values to become effective and competent professional Psychologists. During the course, the students are taken for field visit at mental health centers and counseling cells besides interactive classroom teaching and laboratory training. The Department has a laboratory with the latest psychological tests & apparatus for the practical use of the students. A separate section of Psychology books is there in the main library with the latest books on the subject.

Department of Punjabi: India being a multicultural land has its uniqueness in its myriad of dialects, regional, national/international languages. This variety of language keeps a treasure of literature that tells the story of the development of human civilization on the vast Indian sub-continent. Keeping in view the multicolor of the country, the Eternal University started Department of Punjabi. The department can boast of undergraduate, postgraduate & Ph.D. Course educating mind with religious and cultural heritage of Punjab.

Department of Education: The department has started functioning from the Academic Year 2021 by offering M.A. Education programme. The department has tried to incorporate all elements of Educational Studies, from knowledge production to the preparation of teachers and teacher educators, to promote the quality education at different levels. Attempts are made to bridge the gap between the pedagogy and curriculum; focus is on different areas relating to Curriculum and Pedagogical Studies, Teacher Education, Philosophy of Education, Psychology of Education, Sociology of Education and History of Education, undertaking the research in the area of education, taking into consideration the learners' perspectives and use of technology in reaching education to all sections of the Society.

Department of Library & Information Science: The general objective of this programme is to contribute to building of professional human resources to meet the various information demands for information handling in various libraries that is colleges, schools and information centres in the country.

PHOTOS SHOWING THE ACTIVITIES OF THE COLLEGE



AKAL COLLEGE OF BASIC SCIENCES

Akal College of Basic Sciences at Eternal University, Baru Sahib envisages a world-renowned centre for quality education and cutting-edge interdisciplinary research in basic and advanced sciences. Keeping in view the importance of basic sciences, B.Sc. (Hons.), Master's and Ph.D. programs in different disciplines have been started in the college. Well-equipped Botany, Chemistry & Biochemistry, Physics, Microbiology, Mathematics and Zoology laboratories are available for research and training. Different departments of Akal College of Basic Sciences are also involved in various research projects externally funded by DST, DBT, NABARD, DRDO, Deutsche Gesellschaft für Internationale Zusammenarbeit (GIZ GmbH), HIMCOSTE etc. The Akal College of Basic Sciences has the following six departments:

- Department of Botany
- Department of Chemistry & Biochemistry
- Department of Mathematics
- Department of Microbiology
- Department of Physics
- Department of Zoology

INFRASTRUCTURE

Akal College of Basic Sciences with its six departments is housed in the main building. Each department has its own fully equipped laboratories with sufficient infrastructure, lecture rooms and laboratories with sufficient chemicals/reagents/consumables and research materials etc.

Department of Botany: The department is actively engaged in the exploration, maintenance, evaluation, and utilization of local medicinal and aromatic plants. It has two labs, one for UG/PG students' practical and the other for plant tissue culture. The labs are well equipped with lab materials viz. models, specimens, microscopes, etc. The high-profile equipment includes HPLC, atomic absorption spectrophotometer, digestion chamber, rotary evaporator, stereo-microscope, freeze-dryer, and Clevenger apparatus. The department is also engaged in maintaining the Botanical-cum-Herbal Garden which harbours germplasm of and more than 250 medicinal plant species.

Department of Chemistry & Biochemistry: Department of Chemistry was established in 2010 under the aegis of Eternal University, now merged with Department of Biochemistry. The department is well equipped with research facilities. Laboratories for UG and PG students have adequate space to perform experiments. The labs are equipped with Fume Hoods, High Pressure Vacuum Pump, Furnaces for preparing nanomaterials etc. The department had established collaborations with GVK Biosciences Pvt. Ltd., Hyderabad and Syngenta, Goa. Noteworthy, students are also getting wonderful opportunity to pursue their project work in reputed and well-established laboratories across the country for the unexplored exploration in respective fields.

Department of Mathematics: Department is running the Programs of B.Sc., B.Sc. (Hon's), M.Sc. and Ph.D. in Mathematics. At present, the department has five faculty members and one guest faculty with different areas of research specialization such as Finsler Geometry, Statistics and Operations Research, Fuzzy logic and Neural network, Image processing, Fractional differential equation, Reliability theory, moving boundary problem, Wavelet based weighted residual method, Bio Heat Transport and Heat mass transfer. The department has distinguished faculty from IIT's, central universities and other reputed institutions of India which have research collaborations with other prestigious institutes in India and abroad. Syllabi of Undergraduate and Postgraduate courses are designed keeping in view the national level examinations such as GATE, NET, TIFR, NBHM, SLET etc.

Department of Microbiology: Department is involved in basic and interdisciplinary research activities in the areas of plant-microbe interactions, parasitology, probiotics, biofuels, antimicrobial drug resistance and metagenomics. It has well-equipped laboratory with essential instruments viz. biosafety cabinet, laminar airflow, autoclaves, compound light microscopes, CO2 incubator, BOD incubator, hot air oven, colony counter, digital weighing balance and anaerobic culture system.

Department of Physics: Department is engaged in basic research as well as novel interdisciplinary areas of Nanoscience & Nanotechnology, Materials Science and Renewable Energy. The laboratories are adequately equipped. There are two main laboratories and one dark room. Faculty members have attracted considerable financial support through research projects from DRDO, DST and HIMCOSTE etc.

Department of Zoology: Department is actively engaged in research on Entomology, Nematology and Non-insect pests of agricultural crops mainly focusing on the problems of local farmers of the region. The department has two well-equipped research laboratories with the latest research facilities, insect rearing cages, models and specimens. Faculty members have attracted considerable support through research projects from DST, Unnat Bharat Abhiyan (UBA), Deutsche Gesellschaft für Internationale Zusammenarbeit (GIZ GmbH) and NABARD. One Ph.D. scholar (Ms. Simranjeet Kaur) was awarded DST INSPIRE fellowship. Department has also organized a virtual awareness programme on healthy lifestyle and cancer prevention in collaboration with a non-profitable organization, Sanjeevani - Life beyond Cancer. The department is also engaged in maintaining the apiary (Bee Keeping Unit) with 25 bee hives boxes of *Apis mellifera*.

PHOTOS SHOWING THE ACTIVITIES OF THE COLLEGE



AKAL COLLEGE OF ECONOMICS COMMERCE AND MANAGEMENT

The college started with two departments in 2011 namely; Department of Economics and Department of Management; and in 2013, the department of Commerce was established. Business and commerce education offers good prospects for the promising students. The Mission of the college is to emerge as a Centre of Excellence which provides leadership in the field of Economics, Commerce and Management Education & Research. In view of the rapid changes in the global economy, the relevance of Economics, Commerce and Management Education has become more imperative. In order to produce smart and creative professionals, the college has realized the growing importance of providing more avenues by introducing new teaching-learning programmes and extending excellent opportunities for intellectual growth. Economic activities dominate the minds of modern people whereas business and commerce supplement the economic activities. Industries are said to be the backbone of the economy. These branches of education are of utmost importance in the context of globalization. Globalization has brought to the fore several issues pertaining to commerce and economics, raising the larger issues of national and international socio-economic relations. The Akal College of Economics, Commerce and Management (AC EC&M) with a single-minded focus on exposing the students to current, relevant and critical issues in the international economic system help them to be ready to face the challenges of the market after completion of their education in these programmes. AC EC&M impart in addition to education, training and other skills to the students that help them to utilize their professional training and expertise to contribute positively to the society at large. Here, the students not only gain glory in academic pursuits but a continuous flow of seminars, workshops, industrial visits & training, on farm/field exercises and quality thesis & dissertation guidance. Technical sessions and guest lectures by the dignitaries also contribute to their development. The college has the following three departments:

- Department of Economics
- Department of Commerce
- Department of Management

Department of Economics: The Department of Economics was established in 2011 and it is one of the oldest Departments in the university. The vision of the Department is to provide knowledge through both teaching and research for the better understanding of the global, national and local level economic issues. Efforts are made to empower the students with critical, analytical and creative use of theory to understand the socio-economic environment and the contemporary problems with better solutions. This Department offers degree programs such as B. Sc (Hons.) Economics, M.Sc Economics and Ph.D. in Economics. In addition, the Department is also running M.Sc. Ag. (Agricultural Economics) two years degree programme. The degree is given by DKSGACA. The students are trained in data collection from rural and urban areas by conducting surveys, data analysis and report writing. The findings are shared with local institutions for making village development plans.

Department of Commerce: Department of Commerce offers degree programs such as B. Com (Hons.) M. Com and Ph.D. in Commerce. This Department is actively engaged in various activities like conducting workshops, seminars, field studies based on surveys, extension activities, etc. In the curriculum, we have mandatory training/internship programme of 45 days under UG programme (B. Com (Hons.)) to provide practical exposure and enhance the skills and knowledge of the students to face the competition in the corporate world. The college is also engaged in organizing guest lectures from renowned faculties from other institutions on contemporary issues. Our competent faculties are engaged in research work and acquired membership of different professional societies.

Department of Management: Department of Management offers degree programs such as BBA, MBA with

specializations in Finance, Human Resource, Marketing & Business Analytics and Ph.D in management. The curriculum facilitates development of skills, abilities and knowledge that enable students to take up positions on higher responsibilities in the corporate world. The management department emphasizes reducing the gap between industry and academics by incorporating corporate workshops, guest lectures by industry professionals and hands-on training. The Department of Management is providing high quality and value-based management education, cutting edge research to contribute to the body of knowledge in management and preparing students with knowledge of innovative management solutions integrating technology and management for a sustainable world.

From 2023-24 the MBA programme in Business Analytics will be taken up in collaboration with Virginia Commonwealth University and University of North Carolina in USA. The faculty from Business School of USA, Sweden, Portugal, Norway and the UK will be involved in this programme. On completing first year at Eternal University, the MBA in Business Analytics programme will provide an opportunity to the students to complete their second year at the Virginia Commonwealth University, USA. Besides, faculty of Eternal University, Baru Sahib, Akal University, Talwandi Sabo and national level management experts from India will also be involved in the curriculum delivery of this programme.

INFRASTRUCTURE

The ambience at ACEC&M offers a unique and complete learning experience. All classrooms are spacious and well equipped to provide the most conducive and comfortable atmosphere that makes teaching more interesting and interactive for students. The furniture and equipment have been chosen with utmost care and every room is provided with required classroom resources for both at under-graduate and postgraduate level. The college is also having one ultra-modern seminar hall having all the modern facilities like projector, Wi-Fi and sound system to make this whole journey of teaching and learning more fun for our students. The faculty members own strong academic proficiency and sophisticated practical insights. They make every effort to help students gain valuable insights that shape their future to become a magnificent human resource.

PHOTOS SHOWING THE ACTIVITIES OF THE COLLEGE

<p align="center">Swachhta Pakhwara Campaign</p> <p>During <i>Swachhta Pakhwara Campaign</i> (1-15 September 2022), Akal College of Economics, Commerce and Management, Eternal University, Baru Sahib organized an “<i>Awareness and Cleanliness Drive</i>” on September 14, 2022, at Lana Bhalta ward of Panchayat Lana Bhalta, District Sirmaur (H.P). The objective of this programme was to create awareness among local people regarding the <i>Swachh Bharat Abhiyan</i>.</p>	
<p align="center">Campus Tour to Visit Waste Management Unit and Akal Dairy</p> <p>The Department of Economics took the students of B.Sc. (Hons.) Economics 5th semester & M.Sc. Economics of 3rd Semester to visit Akal Waste Management Unit and Akal Dairy of Baru Sahib on 10 November, 2022.</p>	
<p align="center">Educational Trip to Mohan Shakti National Heritage Park</p> <p>The faculty of the Department of Economics organized educational trip for 27 students of the college to ‘Mohan Heritage Park’ at Solan on 23rd November, 2022.</p>	

AKAL COLLEGE OF EDUCATION

Under the aegis of the Eternal University, Akal College of Education is the premier institute exclusively for girl students who would like to excel and make their career in the field of education. Akal College of Education is approved by National Council for teacher Education (NCTE) and Affiliated to Eternal University. The college offers two years B.Ed. education degree programme. Administratively, the faculty is also running MA & Ph. D education programmes for which degrees are awarded by the Akal College of Arts and Social Sciences.

INFRASTRUCTURE



Social Science Laboratory



Science Laboratory



Computer Lab



Art & Craft Resource Centre



Smart Board Class Rooms

EDUCATION AND TEACHING SKILL DEVELOPMENT

Getting hands-on teaching experience in different educational boards such as IB (International Baccalaureate), Cambridge, CBSE (Central Board of Secondary Education) and NCERT (National Council of Educational Research and Training) can be immensely beneficial for students studying at Akal College of Education.



Akal Academy Baru Sahib :

Akal Academy Baru Sahib in Himachal Pradesh, India, is a renowned educational institution known for its holistic approach to education that follows the Cambridge & CBSE curriculum. Rooted in Sikh values, the academy focuses on academic excellence, spiritual growth, and character development. With modern infrastructure and a picturesque campus, it offers a comprehensive curriculum from Grade VI to Higher Secondary levels. Akal Academy Baru Sahib also actively engages in social initiatives to uplift the underprivileged. It stands as a beacon of educational excellence, shaping the lives of students and nurturing responsible citizens.

Akal Academy Baru Sahib provides a nurturing environment for students to excel academically and grow personally. The school prepares students to face global challenges and succeed in their future endeavours.



IB School Baru Sahib :

IB-Primary Year Programme is well-designed curriculum that is a mix of academics, creativity and personality development. We follow the IB-PYP curriculum for Grades Nursery to V. It is an inquiry based; trans-disciplinary approach practised globally. With a focus on holistic development, the school provides a comprehensive education from primary to secondary levels. The IB curriculum emphasizes critical thinking, inquiry-based learning, and international-mindedness. Situated in a scenic environment, the school provides a conducive atmosphere for academic and personal growth. IB School Baru Sahib prepares students to become globally-minded individuals, equipped with the skills and knowledge necessary to thrive in an increasingly interconnected world.



Teaching experience in these diverse educational boards allows students to develop a comprehensive understanding of different curricula, teaching methodologies, and assessment practices. It broadens their knowledge and skills, enabling them to cater to the needs of students from various educational backgrounds.

CLUB ACTIVITIES

All B.Ed. Trainees are divided into 06 clubs for their harmonious development. The activities of these clubs are organized on every Saturday. Each trainee is the member of at least two clubs.



The students of particular club organize activities and all trainees participate in it. The clubs are:

- Journal Club
- Sports Club
- Literary Club
- Peace and Harmony Club
- Eco. Club
- Media Club
- Creativity and Innovation Club

PLACEMENTS

The students of ACE got 100 per cent campus placements through a chain of 129 Akal Academies located in Punjab, Haryana, Rajasthan, Himachal Pradesh and Uttar Pradesh and many of our students cleared Teacher Eligibility Test (TET) and other competitive exams like IELTS, government exams.



AKAL COLLEGE OF ENGINEERING & TECHNOLOGY

Akal College of Engineering & Technology is a leading technical college of northern India located in a beautiful valley of Baru Sahib in Himalayan region. The college was formally inaugurated in 2007 by Raja Virbhadra Singh, Chief Minister Himachal Pradesh. The vision of the college is to achieve overall excellence in education by continuously upgrading the teaching-learning process and incorporating the latest technological advancements worldwide with ethical responsibilities. The college offers B.Tech. (CSE), M. Tech. (CSE), and Ph.D. (CSE) programmes to train manpower equipped with skills for achieving the highest level of professional competency among the students in Computer Science & Engineering (CSE). The department continuously updates its course curricula as per AICTE guidelines with major emphasis on advanced technology with training, certification and industrial visits, development of technical and communication skills for suitable placement of the students in India and abroad. The department organizes national and international conferences, workshops, seminars, short term courses and hands-on training programs regularly to exchange ideas, and to strength cooperation among the students and faculties. The college has competent faculty with Ph.D.'s from leading universities taking keen interest in research, and also attracting a regular stream of visiting faculty members. Our faculties are diligently involved in training students and preparing them for the future ahead.

Sabudh foundation is closely collaborated with ACET, Eternal University & offering free of cost 6 months training & slowly adding their Course Curriculum from very first semester. The foundation works on Data Science, Pega Technologies and Artificial Intelligence projects having real social impact. The interns will be trained for machine learning and AI from the leading lights in the industry and academia. The CSE students are working on real-world, high impact problems in areas such as agriculture, governance, healthcare, and education with potential employment offered after the completion of the internship. On line trainings are closely incorporated with our recent revised syllabus following from Sabudh, SWAYAM Courses in Regional Languages, Massive Online Open Courses (MOOCs), NPTEL and Learning Python, Spatial Data Science, Data Exploration and Pre-processing, Supervised Learning, Stats with R, Maths for Machine Learning, Introduction to Machine Learning, Cyber Security and Deep Learning, Internet of things, Deep Learning, Unsupervised Learning are the new areas incorporated in the recent syllabus. The department has also started a Ph.D. program in CSE to carry out research in solving real world problems with a major emphasis on Cloud Computing, Sensor Networking, Content Base Image Retrieval, Network Security Data Analysis, Big Data, Automatic Speech Recognition System (specific for English and Punjabi language) and Artificial Intelligence.

INFRASTRUCTURE






Computer Science Engineering Department has well stocked laboratories to fulfil the needs of the students to perform various experiments related to computer science & engineering subjects from first year to final year students such as Programming & Multi-media Labs, Cloud Computing & Data Network Lab, Linux, Networking, Data Structure Lab and Database Management System (DBMS) Laboratory equipped with latest desktop & latest Laptop with Android, IOS & Microsoft platforms. The department also has a Communication Skills Lab with 60 multi-media systems to improve communication skills especially English.

PHOTOS SHOWING THE ACTIVITIES OF THE COLLEGE



LAB PICS

PLACEMENT RECORD

Company Name	Number of Students Placed
	Two students placed with annual package of Rs 9.34 Lacs.
	One student placed with annual package of Rs 6.13 Lacs
 Persistent Systems	Two students placed with annual package of Rs 4.3 Lacs
 Wipro Ltd.	Two students placed with annual package of Rs 3.50 Lacs
 Luminous Power Technologies	Seven students placed with starting package of Rs 3.50 Lacs

AKAL COLLEGE OF HEALTH AND ALLIED SCIENCES

It is the first Nursing College in Himachal Pradesh established in the year 2008 by the 'Kalgidhar Trust' in the valley of divine peace 'Baru Sahib'. Affiliated by Himachal Pradesh Nursing Registration Council (HPNRC) and Indian Nursing Council (INC).

Courses Offered:



Certificate Course on Counselling (Mental Health and Substance Abuse) 6 Months

INFRASTRUCTURE



CLINICAL EXPERIENCE

Parent Hospital: The Akal Charitable Hospital is the 200 bedded hospital which provides ample opportunities for students' clinical exposure and practical training. In addition students are gaining enriched clinical experience from multi-specialty Affiliated Hospitals:

- Indira Gandhi Medical College & Hospital (IGMC), Shimla (H.P.)
- Kamla Nehru Hospital (KNH) Shimla (H.P.)
- Dr Y S Perumal Medical College & Hospital, Nahan (H.P)
- Dr. Vidhya Sagar Mental Institute, Amritsar (Punjab)
- NIMHANS, Bangalore

- Civil Hospital Nahan & Rajgarh
- Community Health Centre, Sarahan

ACADEMIC ACTIVITIES



Collaboration with Drexel University & Texas Woman's University, USA

We are excited to announce the collaboration between Akal College of Nursing, Eternal University, Drexel University & Texas Woman's University, USA. This collaboration marks a significant milestone in the fields of academia, research, healthcare, and student exchange, fostering a global partnership that will enrich the educational experiences of students and advance knowledge in the nursing and healthcare domains.



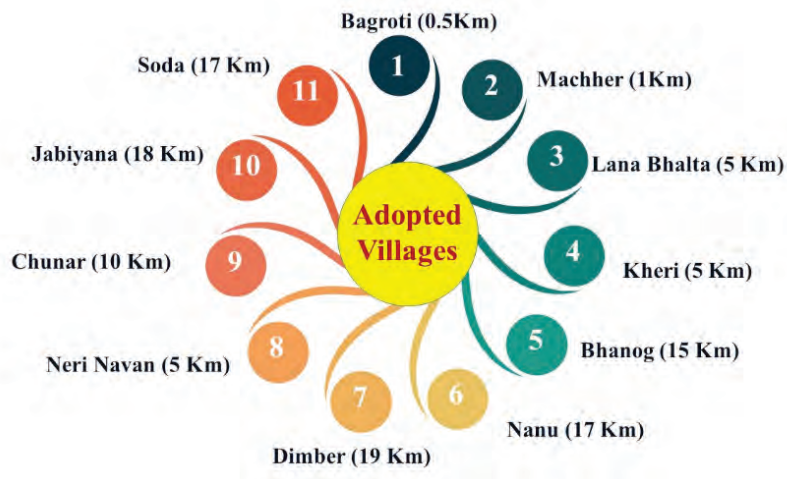
Academic Session

Skill Workshop

FDP on Trends in Research

By Faculty from Drexel University & Texas Woman's University, USA

HEALTH CARE SERVICES TO COMMUNITY



Free Health Check-up and Medical Camp

Akal College of Health and Allied Sciences celebrated World Health Day 2022 “Our Planet, Our Health” on 1st April to 6th April 2022. Free Health Camp was organized at 7 adopted Villages of Department of Community health Nursing, Akal College of Nursing, Eternal University such as Bagroti, Neri Nawan, Chunnar, Jabiyana, Machher, BongliKetch, Lana Mue and Riwadla. Total beneficiaries 624 people.



World Kidney Day

On 10/03/2022 the World Kidney Day was organized by Akal College of Nursing at Eternal University, Baru Sahib. Activities such as Awareness Rally, Street Play, Slogan & Poster Competition, Lecture Presentation on **How well you know your kidney?** Was conducted for the different group of people in respective time schedule. Medical camp was organized during the World Kidney Day in view of screening and monitoring the Blood Glucose and Blood Pressure among the people residing at Barusahib, Shimla & Amritsar.



CENTRE FOR PUBLIC HEALTH AND HEALTHCARE ADMINISTRATION

Since 2010 the goal of this Centre is to acquire and disseminate basic understanding of Public Health Systems and develop effective technologies for application across the wide range of social needs through education & research. Keeping in view the scope and benefits of Public Health interventions, Eternal University has initiated Postgraduate & Doctorate programme in Public Health with a combination of innovative curricula and basic research in different areas of specialization. All the passed-out scholars are well placed on the jobs of their satisfaction.

Pedalling Towards a Glorious Drug-Free Future

Akal Centre for Public Health & Administration, in collaboration with Akal College of Nursing and Akal De-Addiction cum Psychiatry Centre, successfully organized a special event to commemorate Drug Free Future. In a remarkable display of determination and unity, a group of dedicated cyclists embarked on a 135 km journey from Chandigarh to Baru Sahib, spreading awareness about drug de-addiction.



International Day Against Drug Abuse & Illicit Trafficking

We are delighted to share that the Akal Centre for Public Health & Administration in collaboration with Akal College of Nursing and Akal De-Addiction cum Psychiatry Centre, organized an event to commemorate the International Day against Drug Abuse & Illicit Trafficking on 26th June 2023 under the guidance of Honourable Dr.(Col) Rajinder Singh, Senior Psychiatrist. Dr. Balbir Singh, Health Minister of Punjab inaugurated the event.



UNIVERSITY INFRASTRUCTURE AND FACILITIES

The Eternal University campus is 100% residential and provides all basic facilities, amenities and is having excellent infrastructure.

ACADEMIC INFRASTRUCTURE

Six storied building with three blocks is housing five of the seven constituent colleges. The lift is accessible for the students to reach different floors of their respective colleges. Two colleges viz, Akal College of Health & Allied Sciences and Akal College of Education are situated in separate buildings. The Department of Music of the Akal College of Arts and Social Sciences operates from the spacious halls and lecture rooms around the main Gurudwara in the center of the campus. A new state-of-the-art building of Dr. Khem Singh Gill Akal College of Agriculture with seven floors is under construction. Another sophisticated instrument laboratory of Food & Technology has been set up as a separate building of two floors with a training hall facility.

BHAI GURDAS HALL

A big multipurpose hall with a seating capacity of about 400 people is situated on the ground floor of the building. The hall has LCD projectors and a sound system. There are greenroom and rest room behind the stage.



(BHAI GURDAS HALL)



GOVERNING BODY HALL

A 60x40' hall fitted with a conference sound system and LCD projector is available for most of the Governing Body and other important meetings on the ground floor.



(GOVERNING BODY HALL)



UNIVERSITY AUDITORIUM

A medium size auditorium with a stage, a seating capacity of about 200 audiences, and a spacious green room behind the stage are available for department-level functions, staff/ students' meetings, and seminars. It is well-equipped with an LCD projector and motor-operated screen and an inbuilt sound system.

HOSTELS

There are two main girls' hostels. One is specifically for Nursing college students and the other for the rest of the university's girl students. The Nursing girls' hostel is having 66 rooms with triple beds capacity and 24 rooms with double bed capacity in a six storied building with lift facility. Each floor has common washrooms. In addition to this, there is a visitor room, reading room, recreational room, stores, and an interfaith hall. There is a canteen providing not only tea and drinks but also delicious food of choice to the students.



(New Girls Hostel)



(Nursing Hostel)

The Eternal University main girls' hostel has 9 floors having 27 rooms with four-bed capacity, 215 rooms with triple bed capacity, 7 rooms with single-bed capacity, which have sharing washrooms at two corners of the hostel on each floor and 18 rooms with attached washroom for Ph.D. scholars. All the rooms are well-ventilated and fully furnished including beds, study desks, chairs, almirahs, etc. There are store and common rooms on each floor. Common rooms are used for reading, indoor games, meditation, canteen, yoga, gym, etc. The mess of the hostels is being run by Kalgidhar Trust to provide fresh, clean, and nutritious food according to a pre-decided menu involving the students' representatives. The dining hall of the mess in the hostels is equipped with water coolers connected with the supply of a common purification unit. The hostel has the provision of geysers and a connection of boiler in all the shared washrooms to provide hot water. Coolers are in place on each floor with the supply of drinking water. There is a laundry facility available near Darbar Hall. All the efforts are being made to give a homely environment to the students.



(Dining Hall)



Akal Charitable Hospital - A Unit of Kalgidhar Society

The Kalgidhar Society, Baru Sahib is a non-profit charitable organization focused on providing education and health care for more than three decades. Akal Charitable hospital is one of the initiatives by the Kalgidhar Society conceptualized by Honorable Baba Iqbal Singh Ji for the benefit of ailing humanity. The hospital provides round-the-clock care to the students and staff members on campus as well as to the residents of this hilly area. The unique infrastructural facilities in the Akal Charitable hospital complex is the multi-specialty with a capacity of one hundred beds where healthcare facilities are provided to underprivileged rural and hilly people at very nominal charges. Free medical and surgical camps and health check-up camps are also organized. Ambulance services are available to tackle any kind of emergency. The hospital has a dedicated

team of expert doctors, trained nurses, and paramedical staff to ensure the health safety of the local patients and in-house population of 3500 (staff and students of Eternal University as well as Akal Academy).



(Akal Charitable Hospital)

Akal De-addiction Center & Psychiatric Services, a unit of Akal Charitable Hospital is running OPD & IPD Services. The hospital also has a female psychiatric unit which is treating patients with both acute and chronic mental illnesses like schizophrenia, depression, personality disorders, mood disorders, etc. Akal Charitable Hospital is the parent hospital of Akal College of Nursing.

The hospital is equipped with:

- OPD services (General, Medical, Gynaecological, Paediatric, Physiotherapy, Psychiatry and Drug De-addiction)
- Indoor wards (Multispecialty)
- Emergency care facilities
- Pathology lab for basic blood tests
- X-Ray Unit
- Ultrasound
- Dental Care Unit
- Physiotherapy
- Neurotherapy and Alternative Medicine Centre

FIRE SYSTEM

An excellent fire extinguishing system is in operation at the campus. All concerned gadgets are placed on each floor of the university colleges, hostels, and residences, in perfect working conditions.

PHOTOSTAT-CUM-PRINTING FACILITY UNIT

Eternal University has its own Photostat/printing facility unit where the students, faculty, and staff take their printouts.

AKAL WASTE MANAGEMENT UNIT

Akal Waste Treatment Unit is established at Baru Sahib where the Eco-Friendly Club of Akal College of Nursing facilitates the participation of nursing students in conducting several events like Individual Health Talks and Mass health awareness camps. Besides these activities, the Liquid and Solid Waste of the entire region in Lana Bhalta Gram Panchayat in Sirmour District is managed by the 'Baru Sahib' organization in a very efficient manner. Baru Sahib has set an example of excellent cleanliness and moved on the path for Nirmal Bharat Abhiyaan. Baru Sahib's Sewage Treatment Plant, Waste Treatment Plant and Waste Water Treatment Plants fascinated the imagination of the district level Awards Committee.

UNIVERSITY LIBRARY

Eternal University has a library with more than 42,000 books by national and international authors on the open shelves. The library subscribes to 54 national and international print journals, magazines, and periodicals along with national and regional dailies to keep the students abreast with the latest developments around the globe. University Library has also subscribed to online journals of the J-Gate portal. In addition to this, there are 45 computers installed in the library connected with LAN. Wi-Fi facility is available in the library for personal laptops with separate seating arrangements. More than 500 CDs/DVDs on different subjects are available in the library. The library has a seating capacity of 260 students for studying in a very calm and quiet environment. Automation of library is in the process of implementation through ERP. The library remains open from 09:00 a.m. to 09:00 p.m. on all working days and 09:00 a.m. to 05:00 p.m. on holidays.



OTHER FACILITIES FOR STUDENTS AND STAFF

The campus of Eternal University has also all the necessary non-academic infrastructural facilities for a comfortable, enjoyable and healthy stay at campus. Most of these facilities are present at the central location of the campus within walking distance of 100-200 meters from all residential apartments and hostels. These facilities include:

I. Banks & ATMs: Considering the financial requirements, the campus has branch of 'State Bank of India' along with a 24x7 ATM facility at walking distance in the centre of the campus.



ii. Post Office and Courier Service of DTDC: An 'India Post' office with a speed post and registration facility is located near SBI in the centre of the campus. The branch is also providing various postal orders, saving and insurance-related schemes of Govt. of India, and delivery service for orders of online shopping via Amazon, Myntra, Flipkart, etc.

iii. Bus Connectivity to Eternal University: Baru Sahib is well connected via road to Rajgarh, Solan, Nahan, and Renuka Ji. There are frequent buses to these places. There is a direct bus service from Baru Sahib to Bathinda via Chandigarh and vice versa at 6:00 AM for students and other travellers from Haryana & Punjab. Round-the-clock taxi service from Baru Sahib to other places is available on demand.

iv. Akal Rojgar Yojna (ARY) Shopping Complex: A shopping complex named Akal RojgarYojna (ARY), an initiative of Kalgidhar Trust is present on the campus and provided with all necessary daily requirements such as groceries, stationery, clothing, footwear, etc. at reasonable rates.

v. Akal Bakery: A highly subsidized bakery started in the year 1996 is operational at the campus. It is situated in a separate building near the laundry in an area of 450 square feet. It is run by The Kalgidhar Trust for baking highly fresh and delicious items-biscuits, bread, pizza, burger, cream rolls, pastries, cake, kulcha, petties, and many other items.

vi. Laundry: Laundry services are excellent and are available at highly subsidized rates. The cloths for washing and ironing are collected between 7:30 to 8:30 AM and handed over after doing the required services from 7:00 to 8:00 PM.

vii. Canteens (Apple-A-Day & Girls Hostel Canteen): Eternal University has an 'Apple a Day' and Girls Hostel Canteen for students and faculty. University students come here during their free time to enjoy tea, coffee, soft drinks, snacks, and other eatables. In both the canteens, the management never compromises on quality and hygiene and ensures that food is available at reasonable rates.



viii. Security: The security and safety of the students are the foremost responsibility of the university. For the same, a large number of security guards are deployed at various posts viz., the entry gate of Baru Sahib, the University entrance, hostels, playgrounds, etc. The students cannot go out of the campus without the prior permission of the concerned Dean Students Welfare and Hostel Warden. They are allowed to go out with the prior consent of their parents.

ix. Sports and Gym Facilities; Outdoor Games: The University has excellent outdoor sports facilities with one of the largest playgrounds in the hilly area providing outdoor facilities for Hockey, Football, Volleyball, Basketball, Handball, Cricket, and Lawn Tennis. Athletic track 200 meters with eight lanes are available. The University has made arrangements for playing even during the night by providing flood light on all these grounds. To utilize the ground facilities, the state organizations have been conducting National and state-level sports and NCC camps at the campus.



A. Indoor Games

Indoor games viz; table tennis, carrom, and chess are available for the students. Indoor Gym with the latest equipment is available in the hostel itself to keep them fit. Yoga is carried out in the University Hall in the morning from 06:00–07:00 a.m. by the expert.

B. Open Gym

An open Gym facility with class equipment is available to students on campus without any fee. Besides, there is a park for the students where students can interact with each other, play, and participate in recreational activities.



(View of New Open Gym)



x. **Information Technology Infrastructure:** The University has state-of-the-art IT Infrastructure. More than 295 computers and 22 printers with the latest configuration are available for the students. The campus is fully Wi-Fi-connected. It has:

- Fifteen (15) virtual servers (DELL/IBM) for 100% redundancy for efficient data management.
- Four Km 10G fibre optics cable network backbone for providing seamless connectivity.
- Campus Agreement, MSDN, and Microsoft Imagine Academy.
- Internet connection (Aircel Leased line) 1:1



xi. **Enterprise Resource Planning (ERP) System:** ERP implementation has been revolutionizing institutional management for some time now, helping institutions to improve their operations. The University is in the advanced stage of implementation of ERP modules for the Examination system, Library, HR, and Admissions. In this process, biometrics attendance is installed for all colleges and is fully functional. The students, faculty and staff are to mark biometric attendance both in the morning as well as in the evening on all working days. The faculty and staff also apply for leaves and semester breaks through ERP which are further recommended and approved by designated officers.

ACADEMIC PROGRAMMES AND ELIGIBILITY CRITERIA

DR. KHEM SINGH GILL AKAL COLLEGE OF AGRICULTURE

Sr. No	Name of the Course	Sanctioned Intake	Eligibility Criteria
UNDERGRADUATE PROGRAMME			
1	B.Sc. (Hons.) Agriculture	60	Intermediate (10+2) in Agriculture/Physics, Chemistry, Biology (PCB) or Physics, Chemistry, Mathematics (PCM) or Physics, Chemistry, Mathematics, Biology (PCMB) with minimum 50% marks in aggregate from a recognized University or Board. In case of SC/ST and Physical Challenged category candidates, the minimum aggregate required shall be 40% marks. The minimum age should be 16 years or above as on 01 st July of particular year in which admission is sought.
2	B.Tech. Food Technology	30	Intermediate (10+2) in Physics, Chemistry, Biology (PCB) or Physics, Chemistry, Mathematics (PCM) or Physics, Chemistry, Mathematics, Biology (PCMB) with minimum 50% marks in aggregate from a recognized University or Board. In case of SC/ST and Physical Challenged category candidates, the minimum aggregate required shall be 40% marks. The minimum age should be 16 years or above as on 01 st July of particular year in which admission is sought.
POSTGRADUATE PROGRAMME (MASTERS)			
3	M.Sc. Biotechnology	05	B.Sc. / B.Sc. (Hons.) in medical/ Agriculture/ Biotechnology / Biochemistry/ Microbiology/ any other branch of biological sciences with minimum 50% marks from a recognized university.
4	M.Sc. Food Science & Technology	10	Bachelor's degree with minimum 50% marks in Medical/Non-medical/Horticulture/ Agriculture/ Post harvest technology/ Food and Nutrition/Biotechnology/ Home Science/ Biochemistry from a recognized university.
5	M.Sc. Ag. Agronomy	10	B.Sc. Agriculture/ Horticulture or B.Sc. (Hons.) Agriculture/ Horticulture with minimum 50% marks from a recognized university.
6	M.Sc. Ag. Horticulture (Veg. Science)	05	B.Sc. Agriculture/ Horticulture or B.Sc. (Hons.) Agriculture/ Horticulture with minimum 50% marks from a recognized university.
7	M.Sc. Ag. Horticulture (Fruit Science)	02	B.Sc. Agriculture/ Horticulture or B.Sc. (Hons.) Agriculture/ Horticulture with minimum 50% marks from a recognized university.
8	M.Sc. Ag. Horticulture (Floriculture & Landscape Archi.)	02	B.Sc. Agriculture/ Horticulture or B.Sc. (Hons.) Agriculture/ Horticulture with minimum 50% marks from a recognized university.
9	M.Sc. Ag. (Genetics & Plant	05	B.Sc. Agriculture/ Horticulture or B.Sc. (Hons.) Agriculture/ Horticulture with

	Breeding)		minimum 50% marks from a recognized university.
10	M.Sc. Ag. (Plant Pathology)	05	B.Sc. Agriculture/ Horticulture or B.Sc. (Hons.) Agriculture/ Horticulture with minimum 50% marks from a recognized university.
11	M.Sc. Ag. (Entomology)	05	B.Sc. Agriculture/ Horticulture or B.Sc. (Hons.) Agriculture/ Horticulture with minimum 50% marks from a recognized university.
12	M.Sc. Agriculture (Agricultural Eco.)	05	B.Sc. Agriculture/ Horticulture/Forestry or B.Sc. (Hons.) Agriculture/ Horticulture/Forestry with minimum 50% marks from a recognized university.
13	M. Tech. Food Technology	05	B. Tech. Food Technology/Biotechnology with minimum 50% marks from a recognized university.
POSTGRADUATE PROGRAMME (DOCTORATE)			
14	Ph.D. Biotechnology	02	M.Sc. / M.Sc. (Hons.) / M. Tech. (Biotechnology) / Biochemical Engineering / Botany / Zoology / Microbiology / Biochemistry / any other branch of biological sciences with minimum 55% marks from a recognized university and 50% marks in EU Entrance test.
15	Ph.D. Food Technology	04	M.Sc./M.Sc.(Hons)/ M. Tech. in Food Processing technology/Food Technology/ Food Science Technology/ Agriculture/Food & Nutrition/Biotechnology/ Agricultural Processing and Food Engineering/ Home Sciences specialization in Food & Nutrition with minimum 55% marks from a recognized university and 50% marks in EU Entrance test.
16	Ph.D. Entomology	01	M.Sc. Entomology/M.Sc. Ag. Entomology with minimum 55% marks from a recognized university and 50% marks in EU Entrance test.
17	Ph.D. Horticulture (Vegetable Science)	02	M.Sc. Horticulture/M.Sc. Ag. Horticulture/M.Sc. Ag. Horticulture (Vegetable Science) with minimum 55% marks from a recognized university and 50% marks in EU Entrance test.
18	Ph.D. Agronomy	01	M.Sc. Agronomy/M.Sc. Ag. Agronomy with minimum 55% marks from a recognized university and 50% marks in EU Entrance test.
19	Ph. D. Genetics & Plant Breeding	01	M.Sc. Genetics & Plant Breeding / M.Sc. Ag. Genetics & Plant Breeding with minimum 55% marks from a recognized university and 50% marks in EU Entrance test.

AKAL COLLEGE OF ENGINEERING & TECHNOLOGY			
UNDERGRADUATE PROGRAMME			
20	B. Tech. CSE	60	On the basis of JEE (Main) with 15% marks for general category and 10% marks for reserved category or HPCET with 20% marks for general category and 15% marks for reserved category or on the basis of 10+2 examination with 45% marks
21	B.Tech. CSE Lateral/Migrated	06	Passed diploma from an AICTE recognized institution with 45% marks for general category in appropriate branch of Engineering & Technology or passed B.Sc. degree from recognized university as defined by UGC, with at least 45% marks and passed 10+2 examination with mathematics as a subject
POSTGRADUATE PROGRAMME (MASTERS)			
22	M.Tech. CSE	05	Admission to the M. Tech. Degree shall be made on the basis of valid GATE score or HPCET with 20% marks or B.E./B. Tech. with 50% marks in relevant field
POSTGRADUATE PROGRAMME (DOCTORATE)			
23	Ph.D. CSE	01	M. Tech. in CSE with minimum 55% marks from a recognized university and 50% marks in the Eternal University Entrance test.
AKAL COLLEGE OF BASIC SCIENCES			
UNDERGRADUATE PROGRAMME			
24	B.Sc. Medical	15	10+2 examination with Physics, Chemistry and Biology or equivalent with 50% marks.
25	B.Sc. Non-Medical	15	10+2 examination with Physics, Chemistry and Mathematics or equivalent with 50% marks.
26	B.Sc. (Hons.) Microbiology	10	10+2 examinations with Physics, Chemistry and Biology/Biotech or equivalent with 50% marks.
POSTGRADUATE PROGRAMME (MASTERS)			
27	M.Sc. Mathematics	10	B.Sc. (Hons.) in Mathematics/ B.Sc. / B.A. with Mathematics as a subject with 50% marks.
28	M.Sc. Chemistry	10	B.Sc. Med/Non-Medical, B.Sc. (Hons.) Chemistry or any other branch with Chemistry as one of the elective subjects with 50% marks.
29	M.Sc. Physics	10	B.Sc. (Hons.) in Physics/ B.Sc. with Physics as one of the subjects with minimum 50% marks. In case of SC/ST and physical challenged category candidates, the minimum aggregate required shall be 45% marks.

30	M.Sc. Botany	10	B.Sc./B.Sc. (Hons.) in Biological Sciences (Botany, Zoology, Chemistry, Microbiology or Biotechnology) with 50% marks.
31	M.Sc. Zoology	15	B.Sc./B.Sc. (Hons.) in Biological Sciences (Botany, Zoology, Chemistry, Microbiology or Biotechnology) with 50% marks.
32	M.Sc. Microbiology	10	B.Sc./B.Sc. (Hons.) in Biological Sciences (Botany, Zoology, Chemistry, Microbiology or Biotechnology) with 50% marks.
POSTGRADUATE PROGRAMME (DOCTORATE)			
33	Ph.D. Chemistry	02	M.Sc. Chemistry / M. Tech. in relevant discipline with min 55% marks from a recognized university and 50% marks in Eternal University entrance test.
34	Ph.D. Physics	03	M.Sc. Physics or M.Sc. (Hons) Physics or M.Sc. in relevant discipline (i.e. Nanotechnology, Material Science and Renewable Energy etc.) with minimum 55% marks from a recognized university and 50% marks in Eternal University entrance test.
35	Ph.D. Botany	04	M.Sc. Botany or Life Sciences, Plant Physiology, Economic Botany, Plant Pathology, Forestry, Plant Biotechnology, Plant Biochemistry, Bio-Sciences, Genetics and Plant Breeding, Environmental Sciences, Horticulture with minimum 55% marks from a recognized university and 50% marks in Eternal University entrance test.
36	Ph.D. Zoology	04	M.Sc. Zoology with minimum 55% marks from a recognized university and 50% marks in Eternal University entrance test.
37	Ph.D. Mathematics	04	M.A. / M.Sc. Mathematics with minimum 55% marks from a recognized university and 50% marks in Eternal University entrance test.
38	Ph.D. Microbiology	02	M.Sc. Microbiology or M.Sc. in any branch of applied biosciences closely related to Microbiology with 55% marks from a recognized university and at least 50% marks in Eternal University entrance test.
AKAL COLLEGE OF EDUCATION			
39	B.Ed.	50	(a) Candidates with at least 50% marks either in the Bachelor's Degree and/or in Master's Degree in Sciences/Social Sciences/Humanity, Bachelor's in Engineering or Technology with specialization in Science and Mathematics with 55% marks or any other qualification equivalent thereto, are eligible for admission to the programme. (b) The reservation and relaxation for SC/ST/OBC/PWD and other categories shall be as per the rules of the Central Government /State Government, whichever is applicable.

AKAL COLLEGE OF ECONOMICS, COMMERCE & MANAGEMENT			
UNDERGRADUATE PROGRAMME			
40	B.Sc. (Hons.) Economics	10	10+2 or intermediate examination in any stream (Arts, Science & Commerce) with 50% marks in aggregate.
41	B.Com. (Hons.)	25	10+2 or equivalent examination with commerce having 50% marks
42	BBA	30	10+2 or intermediate examination in any stream (Arts, Science & Commerce) with 50% marks in aggregate.
POSTGRADUATE PROGRAMME (MASTERS)			
43	M.Sc. Economics	05	Bachelor degree in Economics or bachelor degree with economics as one of the subjects with 50% marks
44	M. Com	05	Bachelor Degree in commerce or bachelor degree with commerce as one of the subjects with 50% marks.
45	MBA	10	The admission in MBA degree course shall be made in the order of merit of valid score of National Level Test CAT, CMAT, MAT etc. respectively with 10% marks for General Category and 05% marks for the Reserve Category or HPCET with 20% marks for General Category and 15% for Reserved Category or Bachelor Degree in BA/BA (Hons)/B.Sc. (Hons)/B.Com./ B. Tech./MBBS or any other bachelor degree with 50% marks.
POSTGRADUATE PROGRAMME (DOCTORATE)			
46	Ph.D. Economics	02	M.A./M.Sc. Economics with minimum 55% marks from a recognized university and 50% marks in Eternal University entrance test.
47	Ph.D. Management	03	MBA with minimum 55% marks from a recognized university and 50% marks in Eternal University entrance test.
48	Ph.D. Commerce	02	M.Com. with minimum 55% marks from a recognized university and 50% marks in Eternal University entrance test.
AKAL COLLEGE OF ARTS & SOCIAL SCIENCES			
UNDERGRADUATE PROGRAMME			
49	B.A. (Hons.) Music	30	10+2 with minimum of 50% marks (any stream)
50	B.A. Humanities	80	10+2 with minimum of 50% marks (any stream)
51	B.Sc. (Hons.) Psychology	20	10+2 with minimum of 50% marks (any stream)
52	B.Lib.	05	Bachelor degree with minimum of 50% marks (any stream)

POSTGRADUATE PROGRAMME (MASTERS)			
53	M.A. English	05	B.A. /B.Sc. with English as one of the compulsory subject in all the three years with 50% marks
54	M.A. Music	15	BA with Music subject in all the three years with 50% marks in aggregate
55	M.A. (Hons.) Punjabi	10	B.A./B.Sc. with Punjabi as one of the compulsory subject in all the three years with 50% marks
56	M.Sc. Psychology	05	B.A./B.Sc. with Psychology as one of the compulsory subject in all the three years with 50% marks
57	M.A. Education	05	Graduation in any stream with 50% marks
POSTGRADUATE PROGRAMME (DOCTORATE)			
58	Ph.D. English	0	MA English with minimum 55% marks from a recognized university and 50% marks in EU Entrance test.
59	Ph.D. Music	04	MA Music with minimum 55% marks from a recognized university and 50% marks in EU Entrance test.
60	Ph.D. Punjabi	01	MA Punjabi with minimum 55% marks from a recognized university and 50% marks in EU Entrance test.
61	Ph. D. Psychology	03	MA/ M. Sc. or M Phil Psychology with minimum 55% marks from a recognized university and 50% marks in EU Entrance test.
62	Ph. D. Education	02	MA (Education/M. Ed or M. Phil with minimum 55% marks from a recognized university and 50% marks in EU Entrance test.
63(i)	Library Science	05	Pursuing B.A./B.Sc. in any stream
(ii)	Career Guidance and Counselling	05	
AKAL COLLEGE OF HEALTH & ALLIED SCIENCES			
UNDERGRADUATE PROGRAMME			
64	B.Sc. Nursing	60	10+2 class passed with science(PCB) and English core/English elective with aggregate 45% marks from recognized board under AISSCE/ CBSE/ ISCE/ SSCE/ HSCE or other equivalent board. Minimum age for admission shall be 17 years as on 31 December of the year in which admission is sought. The student shall be medically fit. Students after equivalent board appearing in 10+2 examination in science conducted by National Institute Open school with 45% marks. Admission is based on merit through entrance exam conducted by the Eternal University.

65	Certificate course on Counselling (Mental Health & Substance Abuse)	10	Graduate or post graduate students in humanities and Nursing staff, Public health professionals, Psychologists, Counsellors , Psychiatric/Medical students, Social workers with 50% marks in their relevant field.
66	Certificate Course in Geriatric Care Assistant	10	Student must qualify 12 th class standard
POSTGRADUATE PROGRAMME (MASTERS)			
67	M.Sc. Nursing	25	The candidate must be registered nurse and registered midwife or equivalent with any State Nursing Registration Council. Minimum education requirement shall be the passing of B.Sc. Nursing/ B.Sc. (Hons) Nursing/Post basic. B.Sc. Nursing with minimum 55% aggregate marks. The Candidate Should have undergone in B.Sc. Nursing /B.Sc. (Hons) Nursing /Post basic B.Sc. Nursing in any institution which is recognized by Indian nursing council. Minimum one year of work experience after Basic B.Sc. nursing. Minimum one year of work experience prior or after post basic B.Sc. Nursing.
68	MPH	10	Bachelor degree in any discipline preferably MBBS, BDS, BAMS,BHMS, B.Sc. Nursing, B. Pharma, BPT, BPH, B.Sc. Micro, B.Sc. Lab Tech (Med), B.Sc. Radiography with 50% marks.
POSTGRADUATE PROGRAMME (DOCTORATE)			
69	Ph.D. Public Health	02	A candidate working in the field of Health with a master's degree (MPH, MHA, MD, M.Sc. Nursing) and a minimum of 55% marks in masters or has done M.Phil. in the related field and 50% marks in EU Entrance test. Candidate from the Non health filed should have a minimumthree- year work experience in the field of health (Any social activist, lawyer or journalist etc.)
70	Ph.D. Nursing	02	The selection will be based on merit either by entrance or by M.Sc. Nursing with 60% marks and 50% marks in EU Entrance Test. If the university opts to conduct entrance examination, then selection for the Ph.D. of the candidate will be based on: (i) Entrance test marks obtained out of 90 marks. Minimum weightage pass marks for entrance will be 60% of 90. (ii) 5 marks for candidates possessing M.Phil. in Nursing (iii) 5 marks weightage for publications.

Note: 5% less marks for qualifying examination and Entrance Test for Reserved Categories as notified by State/Central Government.

**APPROVED TUITION FEE BY HP GOVERNMENT FOR THE
ACADEMIC SESSION 2023-24**

Sr. No.	Name of the Course	Fee Structure for First Semester which includes Rs. 5000/- as Security Money	Fee structure for 2 nd semester & onwards (Rs.)
UNDERGRADUATE PROGRAMMES			
1	B.Sc. (Hons.) Agriculture	42500	37500
2	B.Tech. Food Technology	35000	30000
3	B. Tech. CSE	55000	50000
4	B. Tech. CSE Lateral/Migrated	55000	50000
5	B.Sc. Non-Medical	25000	20000
6	B.Sc. (Hons.) Microbiology	30000	25000
7	B.Sc. Nursing(State Quota)	24425	19425
8	B.Sc. Nursing (Management Quota)	44375	39375
9	B.Sc. (Hons.) Economics	30000	25000
10	B.Ed.	25000	20000
11	B.Com. (Hons.)	30000	25000
12	BBA	23750	18750
13	B.A. (Hons.) Music	20000	15000
14	B.A. Humanities	20000	15000
15	B.Sc. (Hons.) Psychology	30000	25000
16	B.Lib.	20000	15000
17	B.Sc. Medical	25000	20000
18	Certificate Course on Counseling (Mental Health and Substance Abuse)	10000	
19	Certificate Course in Geriatric Care Assistant	10000	
20	Add-on-course: 1. Library Science 2. Career Guidance & Counseling	An additional fee of Rs. 5000/- will be charged per course per semester	
POSTGRADUATE PROGRAMMES			
21	M.Sc. Biotechnology	35000	30000
22	M.Sc. Agronomy	35000	30000
23	M.Sc. Ag. (Genetics & Plant Breeding)	35000	30000
24	M.Sc. Ag. (Entomology)	35000	30000
25	M.Sc. Ag. Horticulture (Vegetable Science)	35000	30000
26	M.Sc. Ag. Horticulture (Fruit Science)	35000	30000
27	M.Sc. Ag. Horticulture. (Floriculture & Landscape Architecture)	35000	30000
28	M.Sc. Ag. (Plant Pathology)	35000	30000
29	M. Sc. Ag. (Agricultural Economics)	35000	30000
30	M.Sc. Food Science &	35000	30000
31	M. Tech. Food Technology	35000	30000
32	M. Tech. CSE	55000	50000
33	M.Sc. Botany	30000	25000
34	M.Sc. Chemistry	30000	25000

35	M.Sc. Mathematics	30000	25000
36	M. Sc Microbiology	30000	25000
37	M.Sc. Physics	30000	25000
38	M. Sc. Zoology	30000	25000
39	M. Sc. Economics	27500	22500
40	M.Com.	27500	22500
41	M. Sc. Nursing	78500	73500
42	MBA	45000	40000
43	M.A. Music	25000	20000
44	M.A. (Hons.) Punjabi	25000	20000
45	M.Sc. Psychology	25000	20000
46	M.A. English	25000	20000
47	M.A. Education	25000	20000
48	MPH	35000	30000
DOCTORATE PROGRAMMES			
49	Ph.D. Biotechnology	37500	32500
50	Ph.D. Food Technology	37500	32500
51	Ph.D. CSE	35000	30000
52	Ph.D. Botany	35000	30000
53	Ph.D. Chemistry	37500	32500
54	Ph. D. Microbiology	35000	30000
55	Ph.D. Mathematics	35000	30000
56	Ph.D. Physics	35000	30000
57	Ph.D. Zoology	35000	30000
58	Ph.D. Economics	32500	27500
59	Ph.D. Management	32500	27500
60	Ph.D. Music	30000	25000
61	Ph.D. Horticulture (Vegetable Science)	37500	32500
62	Ph.D. Agronomy	37500	32500
63	Ph.D. Entomology	37500	32500
64	Ph.D. Commerce	32500	27500
65	Ph.D. Punjabi	30000	25000
66	Ph.D. Nursing	30000	25000
67	Ph.D. Genetics & Plant Breeding	37500	32500
68	Ph.D. Psychology	35000	30000
69	Ph.D. Education	30000	25000
70	Ph.D. English	30000	25000
71	Ph.D. Public Health	37500	32500

NOTES:

1. Hostel Charges in addition to tuition fee as approved by the HP Government:

Single Seater	- Rs. 31500/- per annum (Subject to availability),
Double Seater	- Rs. 25200/- per annum,
Triple Seater	- Rs. 18900/- per annum.

2. Meal Charges as per actual and subject to revision.

3. Laundry, Medical, Uniform, Transport, Photostat or any other facility availed by the student will be charged as per actual.

4. Student desires to pay fee in installment can be accommodated; however, he/she has to give an undertaking at the time of admission.

5. Hostel and mess charges will not be applicable for non-hosteller students.

6. Minimum 50% of one semester tuition fees, boarding & lodging are mandatory to be paid at the time of admission for issuance of Registration Number by the Registrar Office

**ETERNAL UNIVERSITY, BARU SAHIB
FACULTY LIST**

AKAL COLLEGE OF ECONOMICS, COMMERCE & MANAGEMENT

DEPARTMENT OF ECONOMICS						
1	Dr. Sudershan Kumar Chauhan	Professor-cum-Dean	28.05.2018	9817212900	acecm@eternaluniversity.edu.in	
2	Ms. Sarabjeet Kaur Dhaliwal	Associate Prof.	08.03.2011	9805098726	-----	Volunteer Service
3	Dr. Shanta Kumari	Associate Prof.	28.01.2019	9816598766	drshantaeco@eternaluniversity.edu.in	
4	Dr. Manjinder Kaur	Assistant Prof.	03.02.2020	9872227814	drmanjindereco@eternaluniversity.edu.in	
5	Ms. Kuldeep Kaur	Assistant Prof.	11.09.2019	9855993392	kuldeepeco@eternaluniversity.edu.in	
DEPARTMENT OF COMMERCE						
6	Dr. Kajal Chaudhary	Assistant Prof.	14.09.2015	9868497280 9992063480	drkajalcom@eternaluniversity.edu.in	
7	Dr. Neha Garg	Assistant Prof.	14.02.2023	8580494574	nilu.garg@gmail.com	
8	Mr. Ambar Srivastava	Assistant Prof.	27.01.2020	9784579968	ambarcom@eternaluniversity.edu.in	
DEPARTMENT OF MANAGEMENT						
9	Dr. Tusshar Mahajan	Professor	06.10.2022	7042816601	tushar.mahajan8gmail.com	
10	Mr. Amit Kumar	Assistant Prof.	06.08.2020	9857227675	amit@eternaluniversity.edu.in	
11	Dr. Ankit Pathania	Assistant Prof.	27.06.2022	8219058331	ankitpathania6067@gmail.com	
12	Mr. Pawan Kumar Dubey	Lecturer	28.08.2012	8894284461	pawankumarmang@eternaluniversity.edu.in	

DR. KHEM SINGH GILL AKAL COLLEGE OF AGRICULTURE

DEPARTMENT OF AGRONOMY						
1	Dr. Baldev Singh Boparai	Professor	01.08.2014	9888610009 9805672270	drbaldevsinghagro@eternaluniversity.edu.in	Adjunct
2	Ms. Manju Attri	Teaching Associate	20.09.2021	9817578980	attrimanju24@gmail.com	
DEPARTMENT OF ENTOMOLOGY						
3	Dr. Yogeeta Thakur	Associate Prof.-cum-DSW	03.02.2020	9418061815	dryogeetathakur@eternaluniversity.edu.in ; dsw@eternaluniversity.edu.in	
4	Dr. Priyanka Thakur	Assistant Prof.	16.08.2016	9805522410	drpriyankaento@eternaluniversity.edu.in	
DEPARTMENT OF PLANT PATHOLOGY						
5	Dr. Sushma Sharma	Assistant Prof.	18.07.2014	9882699465	sushma@eternaluniversity.edu.in	
6	Dr. Praneet Chauhan	Assistant Prof.	29.08.2019	8988439447	praneetchauhan@eternaluniversity.edu.in	
DEPARTMENT OF GENETICS, PLANT BREEDING AND BIOTECHNOLOGY						
A) GENETICS AND PLANT BREEDING						
7	Dr. Vikrant Tyagi	Assistant Prof.	02.03.2020	9478303813	drvikrantgpb@eternaluniversity.edu.in	

B) BIOTECHNOLOGY						
8	Dr. H.S. Dhaliwal	Professor	01.03.2011	9805098702	hsdhaliwal07@gmail.com	Prof. Eminence
9	Dr. Ajar Nath Yadav	Assistant Prof.	01.01.2016	9317081112	ajar@eternaluniversity.edu.in	
10	Dr. Sapna Thakur	Assistant Prof.	25.07.2017	9459506118	sapna@eternaluniversity.edu.in	
11	Dr. Imran	Assistant Prof.	01.07.2017	8627912365	imran@eternaluniversity.edu.in	
DEPARTMENT OF HORTICULTURE						
12	Dr. Satish Kumar Sharma	Professor-cum-Dean	24.06.2019	9414012453	aca@eternaluniversity.edu.in	
13	Dr. Amit Saurabh	Assistant Prof.	12.12.2019	9418120633	amitsaurabh@eternaluniversity.edu.in	
14	Dr. Divya Slathia	Assistant Prof.	28.11.2020	9906354566	drdivyahort@eternaluniversity.edu.in	
15	Dr. Yogendra Singh	Assistant Prof.	30.11.2020	8755889890	dryogendrahort@eternaluniversity.edu.in	
16	Dr. Yashpal Singh Bisht	Assistant Prof.	20.12.2022	8057145856	ysbishthort@eternaluniversity.edu.in	
DEPARTMENT OF FOOD TECHNOLOGY						
17	Dr. Krishan Kumar	Associate Prof.	01.06.2015	8894810171	krishan@eternaluniversity.edu.in	
18	Dr. Tajendra Pal Singh	Assistant Prof.	31.07.2018	9027196460 8556001621	tajendra@eternaluniversity.edu.in	
19	Dr. Naseer Ahmed	Assistant Prof.	19.08.2019	9086024386	drnaseerahmed@eternaluniversity.edu.in	
20	Dr. Sachin Kumar	Assistant Prof.	09.05.2023	8814966348	sachinkumarbhola@gmail.com	
21	Mr. Mohd Aaqib Sheikh	Assistant Prof.	05.05.2023	7889466628	Sheikhaaqib111@gmail.com	
22	Dr. Divya Chauhan	Teaching Associate	01.10.2022	8278734672	chauhandivya1703@gmail.com	
DEPARTMENT OF SOIL SCIENCE AND AGRICULTURAL CHEMISTRY						
23	Dr. Deepak Kumar	Assistant Prof.	22.09.2021	7895974927	deepakkumar20031993@gmail.com	
DEPARTMENT OF AGRICULTURAL EXTENSION & COMMUNICATION						
24	Dr. Mohit Kumar	Assistant Prof.	05.11.2019	9456635739 7355700644	drmohitaec@eternaluniversity.edu.in	
SECTIONS – AGRICULTURAL ENGINEERING						
25	Dr. Mahesh Prasad Tripathi	Assistant Prof.	03.12.2018	8839463167	drmaheshtripathi@eternaluniversity.edu.in	

AKAL COLLEGE OF ARTS & SOCIAL SCIENCES

DEPARTMENT OF MUSIC						
1	Dr. Purvi Luniyal	Professor-cum-Dean	01.02.2008	9816400543	acass@eternaluniversity.edu.in	
2	Dr. Amandeep Kaur	Assistant Professor	01.04.2023	8800784040	dramandeepkaursitar@gmail.com	
DEPARTMENT OF ENGLISH						
3	Dr. Geeta Sharma	Assistant Prof.	12.08.2019	7055986342 9453312174	geetaeng@eternaluniversity.edu.in	

4	Ms. Nivedita Bhardwaj	Assistant Prof.	06.02.2023	7889597257	niveditabhardwaj35@gmail.com	
5	Ms. Kawaljot Kaur	Assistant Prof.	17.02.2023	9878931271	Kawaljotkaur433@gmail.com	
DEPARTMENT OF PUNJABI						
6	Dr. Simranjit Singh	Assistant Prof.	16.02.2016	9417642669 7807302105	drsimranjitpun@eternaluniversity.edu.in	
7	Mr. Gurtej Singh	Assistant Prof.	26.09.2017	9815970468	gurtejpun@eternaluniversity.edu.in	
DEPARTMENT OF PSYCHOLOGY						
8	Dr. Neelam Kumari	Assistant Prof.	01.09.2016	9816162422	neelamkumari@eternaluniversity.edu.in	
9	Dr. Yashpal Azad	Assistant Prof.	27.08.2018	9418588385	yashpal@eternaluniversity.edu.in	
10	Dr. Deepika Negi	Assistant Prof.	11.12.2021	7807210904	deepikanegi.80@gmail.com	
DEPARTMENT OF LIBRARY & INFORMATION SCIENCE						
11	Dr. Meenakshi Gupta	Deputy Librarian	13.07.2010	9817614914	meenakshilib@eternaluniversity.edu.in	
OTHER FACULTY MEMBERS						
12	Ms. Prachi Singh	Assistant Prof. (Political Science)	01.03.2022	8797349219	prachi.kitkat@gmail.com	
13	Ms. Avneet Kaur	Assistant Prof. (History)	25.03.2022	6280274173	grewaljiya840@gmail.com	

AKAL COLLEGE OF ENGINEERING & TECHNOLOGY

DEPARTMENT OF COMPUTER SCIENCE AND ENGINEERING (CSE)/ICT						
1	Dr. Sudhanshu Maurya	Associate Prof.	02.06.2023	7717782567	drsudhanshucse@eternaluniversity.edu.in	
2	Er. Rajeev Thakur	Assistant Prof.	01.03.2022	8894365311	thakur.rajeev.1984@gmail.com	
3	Mr. Manish Kumar	Assistant Prof.	29.06.2023	8210366323	Manish.singh0617@gmail.com	
ENGINEERING STAFF						
4	Mr. Ravinderjit	Workshop Instructor	10.01.2009	9816819379 9882448815	ravinderjitwi@eternaluniversity.edu.in	

AKAL COLLEGE OF BASIC SCIENCES

DEPARTMENT OF MATHEMATICS						
1	Dr. Sandipan Gupta	Professor-cum-Dean	05.05.2012	8627879848	acbs@eternaluniversity.edu.in	
2	Dr. Surjan Singh	Associate Prof.	14.09.2015	9456832737	drsurjanmath@eternaluniversity.edu.in	
3	Dr. Anil Kumar Gupta	Assistant Prof.	16.03.2020	8602369712	anilkumargupta@eternaluniversity.edu.in	
4	Dr. Soni Bisht	Assistant Prof.	29.07.2020	8755569288	sonibisht@eternaluniversity.edu.in	
DEPARTMENT OF CHEMISTRY AND BIOCHEMISTRY						
5	Dr. Kamal Kishore	Associate Prof.	15.07.2015	9459010881	kamal@eternaluniversity.edu.in	

6	Dr. Anil Kumar	Assistant Prof.	13.02.2018	9354470382 8199970382	dranilchem@eternaluniversity.edu.in	
7	Dr. Naresh Kumar	Assistant Prof.	03.10.2022	9728194312	drnareshbiochem@eternaluniversity.edu.in	
DEPARTMENT OF PHYSICS						
8	Dr. Puneet Negi	Assistant Prof.	05.12.2015	9012387326	puneetnegi@eternaluniversity.edu.in	
9	Dr. Madan Lal	Assistant Prof.	06.08.2018	9805577857	madan.physics26@eternaluniversity.edu.in	
10	Dr. Poonam Kumari	Assistant Prof.	10.02.2016	9805942792	drpoonaphy@eternaluniversity.edu.in	
DEPARTMENT OF BOTANY						
11	Dr. B.D. Sharma	Professor	01.01.2020	9418800350	drbdbotany@eternaluniversity.edu.in	Adjunct
12	Dr. Vivek Sharma	Associate Prof.	17.08.2013	9816767189	drvivekbotany@eternaluniversity.edu.in	
13	Dr. Devendra K. Srivastava	Assistant Prof.	16.08.2016	9816196707	drdevendrabotany@eternaluniversity.edu.in	
14	Dr. Pradeep Kumar Singh	Assistant Prof.	31.07.2018	7347666567	singhpk@eternaluniversity.edu.in	
15	Dr. Lata	Assistant Prof.	04.02.2020	7696344254	drlatabotany@eternaluniversity.edu.in	
DEPARTMENT OF MICROBIOLOGY						
16	Dr. Nasib Singh	Associate Prof.	19.12.2015	7307920510	drnasibmicro@eternaluniversity.edu.in	
17	Dr. Divjot Kour	Assistant Prof.	12.11.2021	9682543479	divjotkour@eternaluniversity.edu.in	
18	Dr. Hemant Dasila	Assistant Prof.	23.09.2022	9389736953	drhemantmicro@eternaluniversity.edu.in	
DEPARTMENT OF ZOOLOGY						
19	Dr. Kanwaljit K. Ahluwalia	Professor	26.06.2021	9872204489	kanwaljit58@gmail.com	
20	Dr. Neelam Thakur	Assistant Prof.	30.03.2015	8351871241	neelamthakur@eternaluniversity.edu.in	
21	Mr. Balbinder Singh	Assistant Prof.	12.02.2018	8219061192	balbinderzoolgy@eternaluniversity.edu.in	
22	Dr. Preety	Assistant Prof.	01.05.2023	7833042807	preetyzoolgy@eternaluniversity.edu.in	

AKAL COLLEGE OF EDUCATION

DEPARTMENT OF EDUCATION (B.Ed.)						
1	Dr. Neelam Kaur	Dean	30.07.2009	9816400504	admin@akalacademy.ac.in	Volunteer
2	Dr. Raino Bhatia	Associate Prof.-cum-Principal	29.10.2013	8894429547	ace@eternaluniversity.edu.in	
3	Dr. Jasvir Kaur	Assistant Prof.	31.07.2018	9779092184	drjasvirbed@eternaluniversity.edu.in	

AKAL COLLEGE OF HEALTH & ALLIED SCIENCES

Sr. No.	Name	Designation	Date of Joining	Contact No.	Email Address	Remarks
1	Dr. Mehmooda Regu	Principal cum Professor	01.12.2022	9419037980	mehmoodaregu@gmail.com	
2	Dr. Anupama K.	Professor	08.10.2019	8618549669	anupama@eternaluniversity.edu.in	

3	Mrs. Usha S.	Professor	16.09.2021	9600296969	ushaacn@eternaluniversity.edu.in	
4	Dr. Priyanka Chaudhry	Associate Professor	11.04.2022	9805077103	ruchidevine232@gmail.com	
5	Mrs. Jaswinder Kaur	Assistant Prof.	01.05.2018	7973155274	jaswinderacn@eternaluniversity.edu.in	
6	Mr. T. Muthukumaran	Assistant Prof.	27.05.2021	9600409623	muthukumaranacn@eternaluniversity.edu.in	
7	Ms. Babita Kumari	Assistant Prof.	07.06.2021	8580855352	babitaacn@eternaluniversity.edu.in	
8	Ms. Manjinder Kaur	Assistant Prof.	25.07.2022	6280384178	rajichodhary@gmail.com	
9	Mrs. Agnus	Assistant Prof.	01.08.2022	8263961684	agnusnewton@gmail.com	
10	Ms. Manpreet Kaur	Assistant Prof.	05.12.2017	7986032123	manpreetaacn@eternaluniversity.edu.in	
11	Ms. Kavita Verma	Assistant Prof.	26.09.2018	9857435923	kavitaacn@eternaluniversity.edu.in	
12	Ms. Vidhi Paul	Assistant Prof.	26.09.2018	7018495657	vidhiacn@eternaluniversity.edu.in	
13	Ms. Rashmi	Assistant Prof.	11.04.2023	7018781505	Rashi.agnihortri457@gmail.com	
14	Ms. Komal Rana	Nursing Tutor	22.10.2019	8894984269	komalacn@eternaluniversity.edu.in	
15	Ms. Sameeksha	Nursing Tutor	22.10.2019	7018951211	sameekshaacn@eternaluniversity.edu.in	
16	Ms. Manisha Sehgal	Nursing Tutor	21.10.2019	9857782875	mnishaacn@eternaluniversity.edu.in	
17	Ms. Suman Kumari	Nursing Tutor	19.07.2021	7876480344	sumanacn@eternaluniversity.edu.in	
18	Ms. Chanchal Lata	Nursing Tutor	21.07.2021	7018166021	chanchalacn@eternaluniversity.edu.in	
19	Ms. Lovepreet Kaur	Nursing Tutor	13.08.2021	9816931962	loverpreetacn@eternaluniversity.edu.in	
20	Ms. Diksha Chaudhary	Nursing Tutor	09.08.2022	9459006290	Sdishu096@gmail.com	
21	Ms. Nikita	Clinical Instructor	04.07.2022	7018050152	Nikitasharma2301@gmail.com	
22	Ms. Anjali	Clinical Instructor	04.07.2022	9310659883	Sanjali1996@gmail.com	
23	Mrs. Poonam Devi	Clinical Instructor	01.08.2022	8628874580	Poonamdhatwalia007@gmail.com	
CENTRE FOR PUBLIC HEALTH & HEALTHCARE ADMINISTRATION						
24	Dr Davinder Singh	Professor	30.07.2009	9816400503	Sccykts@barusahib.org	Volunteer Service
25	Dr. Neelam Kaur	Professor	30.07.2009	9816400504	admin@akalacademy.ac.in	
26	Dr. Narinder Pal Singh	Professor	22.10.2021	9868446621	nanusingh58@gmail.com	
27	Dr (Col) Rajinder Singh	Adjunct Faculty	-	9876712054	Psy33d@gmail.com	
28	Dr. Shaveta Menon	Assistant Prof.	30.08.2019	8448252758	achas@eternaluniversity.edu.in / dr.shaveta@eternaluniversity.edu.in	
29	Mr. Salman Khan	Assistant Prof.	01.09.2022	9760788410	Salmantomar780@gmail.com	

TRAINING AND PLACEMENT

The Training and Placement cell of Eternal University has been established with the objective of providing a platform for the corporate and institute interaction. The placement cell looks for opportunities of upcoming leaders of the corporate. We at the training and placement cell put all efforts to satisfy students and their parents' expectations for the future career goals. After graduation we encourage students to join corporate jobs or opt for higher studies in India and abroad. We organize webinars, guest lectures and seminars for appropriate selection of jobs and higher studies. We also have an entrepreneurship cell to guide and encourage aspiring students to go ahead with entrepreneurship. Majority of the students opt for corporate jobs so we work on two parameters:

To develop skilled & certified professionals through Personality Development Programmes as per the industry requirements. Our close associations with the industry partners help us to conduct some quality placement drives for entry-level recruitments.

In a nutshell, the idea of T&P Cell is to prepare graduates while at college, not only to train them well on latest technologies or certifications but also have the ability to integrate the learning across the foundation areas to apply the learning into real time situations and also have professional skills to effectively compete in this competitive market place, through teamwork project management effective communication logical and innovative thinking.



Companies that visited our campus for placements



ETERNAL UNIVERSITY ALUMNI ASSOCIATION

The Eternal University has a strong Alumni Association. The alumni are regularly informed and are kept in touch with the university activities and latest developments. An alumni meet is organized every year in the University before the convocation. The alumni participate during placement opportunities, project trainings and industrial collaborations. Many alumni have gone for higher studies to Canada, Australia and in European countries. Some of our alumni joined armed forces, technology and management sector.

OFFICIAL CONTACT NUMBERS

Sr. No.	Name	Mobile No.
1	Vice Chancellor Office	9805098724
2	Registrar Office	9805098718
3	Examination Branch	9805098727
4	Accounts Office	9805098725
5	Dean Students Welfare	9816400546
6	Admission Office	8210258484 9816400624
7	IT Department	9882409397
8	Nursing College	9816400512 9816441158
9	Inquiry/Reception (KTS)	9816400509
10	Xerox Operator	8219886519

INSTRUCTIONS/REGULATIONS REGARDING RAGGING

As per the Supreme Court judgment in Vishwa Jagriti Mission vs Central Government and Others (2001) 6 SCC 577, ragging is a cognizable criminal offence and is strictly prohibited. If any incident of ragging comes to the notice of the College/University, the concerned student shall be given the liberty to explain and if his explanation is not found satisfactory, the College/University will expel him from the relevant programme as well as the campus. As per the Himachal Pradesh Educational Institutions (Prohibition of Ragging) Ordinance '2009' "Ragging" means any act, conduct, or practice by which the dominant power of senior students, former students, or outsiders, is brought to bear on students freshly enrolled or students who are in any way considered junior by other students and includes individual or collective act or practices which involves physical or collective act or practices which:

- Violate the status, dignity, and honor of such students; or
- Expose students to ridicule and contempt and affect their self-esteem; or
- Entail verbal abuse and aggression, indecent gestures, and obscene behavior.

DISCIPLINARY ACTION

Ragging is a cognizable offence under the law and the punishments to be meted out have to be exemplary and justifiably harsh to act as a deterrent. It may include:

- Suspension from attending the classes
- Individual or collective fines
- Withholding/withdrawing scholarships, fellowships, and other benefits
- Cancellation of admission, suspension, rustication, or expulsion from the University/Hostel.
- Withholding results
- FIR with the police and arrest
- More severe punishments were justified such as fines/imprisonment etc.
- Collective punishment may be imposed where involved persons are not identified.

ANTI-RAGGING COMMITTEE

Sr. No.	Name	Designation	Contact No.
1	Dr. Davinder Singh Vice-Chancellor	Chairman	9815984489
2	Dr. Neelam Kaur, Dean, ACN & ACE	Member	9816400504
3	Dr. Yogeeta Thakur, Dean Student Welfare	Member	9816400546
4	Dr. Harpreet Kaur, Admin Incharge, Akal College of Nursing	Member	9816441158
5	Dr. Neelam Thakur, Assistant Professor, Zoology	Member	8351871241
6	Sh. Surinder Mohan, HPAS, SDM, Rajgarh	Member	01799-221034
7	Sh. Bishan Thakur, HPS, SDPO, Rajgarh	Member	9418458877
8	Sh. Subhash Lal, SHO, Pachhad	Member	9459290708
9	Mr. Ved Parkash, Amar Ujala, Rajgarh	Member	9418453018
10	Mr. Inderjeet Singh	Security Officer, Kalgidhar, Trust, Baru Sahib	8427960080
11	Ms. Tanvir Kaur, Ph.D. Biotechnology	Student Member	9877068575
12	Ms. Shreya Thakur, B.Sc. (Hons.) Agriculture (4 th Year)	Student Member	8219972989

MEMBERS OF ANTI-RAGGING SQUAD

Sr. No.	Name	Designation	Contact No.
1	Dr. Yogeeta Thakur, Dean Student Welfare	Chairman	9816400546
2	Dr. Harpreet Kaur, Admin Incharge, Akal College of Nursing	Member	9816441158
3	Dr. Shanta Kumari, Associate Professor, Economics	Member	9816598766
4	Ms. Jaswinder Kaur, Assistant Dean Student Welfare	Member	7973155274
5	Ms. Mamta Jaiswal, Warden, New Girl Hostel	Member	7973155274
6	Ms. Rekha, Warden, Girl Hostel (Nursing)	Member	8894567840
7	Ms. Shinder Kaur, Warden, Girls Hostel (B-Block)	Member	9816400638
8	Dr. Divjot Kaur, Assistant Professor, Microbiology	Member	7580050467
9	Ms. Pallavi, Ph.D. (Botany)	Student Member	8894180866
10	Ms. Diksha Saini, M.Sc. (Horticulture)	Student Member	8057634795

MONITORING CELL

Sr. No.	Name	Designation	Contact No.
1	Dr. S. K. Chauhan, Additional Registrar	Chairman	8278717478
2	Dr. Yogeeta Thakur, Dean Student Welfare	Member	9816400546
3	Dr. Purvi Luniyal, Dean, Akal College of Arts & Social Sciences	Member	9816400543
4	Dr. Harpreet Kaur, Admin Incharge, Akal College of Nursing	Member	9816441158
5	Ms. Jaswinder Kaur, Assistant Dean Student Welfare	Member	7973155274
6	Dr. Raino Bhatia, Principal, ACE	Member	9999187604
7	Ms. Jasneet Kour, Ph.D. (Botany)	Student Member	9557127872

With all these committees, awareness, and counselling of students, Eternal University has been a ragging-free campus.

MEDALS AND SCHOLARSHIPS

The University encourages the students to compete in ACADEMICS by instituting awards/medals and thereby enhancing quality education.

Certificate of Merit: The Certificates of Merit are awarded to the candidates who have achieved an OCPA of 8.00 (10.00 basis) or above at the end of their Bachelor's and Master's Degree programme with specific conditions.

University Medal for Toppers: The University Gold Medal is awarded to the topper of each class of the batch year who has achieved OCPA not less than 8.00/ 10.00 basis at the end of the Bachelor's and Master's degree programme with specific conditions.

University Gold Medal for Best all-round Graduate/Postgraduate: Best all-around graduate and postgraduate is awarded a gold medal based on academic / sports and co-curricular activities with a specific set of conditions.

Award of Excellence: In some of the degree programmes, the Award of Excellence is given to the topper in the form of cash (Rs.10,000/-) instituted in the name of different personalities given below:

1. Sh. Pandit Talatam Chand Memorial for B.Sc. (Hons.) Economics
2. Smt. Narbada Devi Memorial for B.Sc. Nursing
3. Sardar Jassa Singh Boparai Memorial for B.Sc. (Hons.) Agriculture
4. Sardarni Tej Kaur Dhaliwal Memorial Cash Award for B.Tech. Food Technology
5. Mrs. Surjit Kaur Hara memorial award of Excellence for Postgraduate student of Dr. Khem Singh Gill Akal College of Agriculture
6. Lilawati award for Mathematics
7. Sardar Bhagat Singh memorial award for the best postgraduate student from Gurdaspur District.
8. Sardarni Kartar Kaur w/o Sardar Bhagat Singh memorial award for the best undergraduate student from Gurdaspur District.

Scholarship/Fellowship Schemes: The students can apply for the under mentioned fellowships during their study at Eternal University*.

- UGC, Maulana Azad National Fellowship for Minority Students for Ph.D.
- UGC, Rajiv Gandhi National Fellowship for SC Candidates for Ph.D.
- Post-Graduate Indira Gandhi Scholarship for Single Girl Child

- Post-Graduate Merit Scholarship for University Rank Holder
- Ashirwad Scholarship for Sikh Students
- H.P .e-Pass Electronic Payment & Application System of Scholarships
- Junior Research Fellowship in Engineering & Technology
- Rajiv Gandhi National Fellowship for Students with Disabilities
- Swami Vivekananda Single Girl Child Scholarship for Research in Social Sciences
- “Ishan Uday” for North Eastern Region
- National Fellowship for OBC Candidates
- National Fellowship for Higher Education of ST Students
- DST- INSPIRE Fellowship
- National Talent Scholarship
- State Merit Scholarship

*The validity and eligibility of the scholarship will be implemented as per the Government Policy and it's subject to change.

MERIT SCHOLARSHIP SCHEMES (For UG and Master's students)

(A) The University offers wide-ranging merit scholarships at the time of admission as well as in the subsequent years as under:

Marks obtained in the Qualifying Exam	Tuition Fee Waiver during First Year
95% & above	75% of the Tuition Fee
90% to < 95%	50% of the Tuition Fee
80% to <90%	30% of the Tuition Fee
70% to <80%	10% of the Tuition Fee

(B) The Tuition fee waiver rules for two real sisters:

i.	Till the period both the sisters studying the University : 50% tuition fee will be waived off to the first elder sister
ii.	Once the first sister pass out from the University: 100% tuition fee will be paid by the second sister till the completion of the course.

In addition, donors do pay for additional financial help for the students as studentship for a year or course duration.

(C) 100% tuition fee waiver will be offered whose parents (Father and Mother) have lost their lives during Covid-19 pandemic. This concession will be applicable for course duration and the students will not be eligible for any other concession.

(D) 25% tuition fee waiver will be given to the following category during the

entire course duration and another concession will be applicable:

(i) Ward of defense personnel (Army/Air Force/Navy/Para Military Forces) either retired/serving

(ii) Wards of freedom fighters

(iii) Single girl child

(E) Financial Assistance: Rs 15000/- per annum against the charges of Boarding and Lodging to the resident student of adopted nearby villages subject to producing residential proof.

(F) Reference Incentives: Rs. 2500/- to Eternal University student who assist to bring new admission in any of the course. This amount will be adjusted in students' tuition fee head.

INTERCONVERSION OF OCPA AND AGGREGATE PERCENTAGE

The following formulae have been adopted by the University to determine the equivalence of each grade point from 1 to 10 under the semester system in terms of percentage of marks awarded under the traditional system.

For conversion of Overall Credit Point Average (OCPA) into percentage of marks:

$$Y = 10Z$$

Where Y = Percentage of marks in the traditional system

Z = Overall Credit Point Average (OCPA) in 10.00-point system of evaluation

For example:

If a student's OCPA is 8.12/10.00 then his/her percentage marks in traditional system will be

$$Y = 10Z$$

$$Y = 10 \times 8.12$$

$$81.2\%$$

Criteria for the award of First and Second Division

On the completion of the program, the student is awarded First or Second-class degree as follows:

Programme	Pass marks	2nd Div. (OCPA)	1st Div. (OCPA)
Postgraduate	5.50 / 10.00	5.50 to 5.99	6.00 & above
Undergraduate	5.00 /10.00	5.00 to 5.99	6.00 & above

CHARGES FOR VARIOUS TYPES OF CERTIFICATES

Sr. No.	Document	Amount (Rs.)
1	Degree (With folder)	1500/-
2	Duplicate Degree (With folder) on urgent basis	5000/-
3	Inter University Migration Certificate (after completion of degree)	Nil
4	Inter University Migration Certificate (during the degree)	750/-
5	Duplicate Migration Certificate	750/-
6	Provisional Degree Certificate	Nil
7	Duplicate Provisional Degree Certificate	750/-
8	Transcript (1 st Copy) including postal charge for abroad	5200/-
9	Transcript (2 nd Copy) including postal charge	2200/-
10	Transcript Academic	750/-
11	Duplicate DMC	1500/-
12	Character Certificate	Nil
13	Changing the name of the student or his/her father's/mother's name in the DMC/PDC/Degree and Transcript	1000/- per document
14	Other Certificates (such as No Backlog, Bonafide etc.)	200/-
15	Certificate of Recognition of the University	Nil
16	Duplicate Certificate of Recognition of the University	200/-

ETERNAL UNIVERSITY

ACADEMIC CALENDAR (2023-24)

For all undergraduate and postgraduate programmes (Except Nursing)

Sr.No.	Events	Odd Semester	Even Semester
1	Commencement of Semester and Registration (without late fee)	Aug 1, 2023 (Tuesday)	Feb 1, 2024 (Thursday)
2	Registration (with late fee)	Aug 10, 2023	February 10, 2024
3	Last date of adding course	Aug 21, 2023	February 24, 2024
4	Last date of dropping a course	Sept 11, 2023	March 11, 2024
5	Mid Semester break	-----	March 25-29, 2024
6	Mid Sessional Practical examination (in classes) (only for exclusive practical course)	Sept 25-29, 2023	-----
7	Mid Sessional theory examination	Oct 3-12, 2023	April 1-10, 2024
8	Mid Sessional Practical examination (in classes) (only for exclusive practical course)	-----	April 11-16, 2024
9	Mid Semester break	Nov 13-17, 2023	-----
10	Mid-Session reports to the Deans	Nov 11, 2023	April 30, 2024
11	End Semester Practical Examinations (in classes)	Dec 4-13, 2023	June 6-14, 2024
12	End Semester Theory Examination	Dec 14-23, 2023	June 17-28, 2024
13	Winter/ Summer breaks (Winter in one slot and summer in two slots of half duration each)	Dec 25, 2023 – Jan 31, 2024	July 1- 30, 2024
14	Declaration of result	February 03, 2023	August 31, 2024
15	Semester duration in weeks and days	20 weeks and six days (146 days)	21 weeks and 1 days (148 days)
16	Semester working days	107	111
17	Teaching days	91	92
18	Day 1 to MSTE* (days)	47	41
19	MSTE to ESTE** (days)	44	51

***MSTE (Mid Sessional Theory Examination; **ESTE (End Semester Theory Examination)**

Note:

- Eternal University will remain closed on National/State holidays i.e., January 26, April 15, August 15, and October 02.
- Academic Calendar is subject to change without prior notice.

**AKAL COLLEGE OF EDUCATION
ETERNAL UNIVERSITY**

ACADEMIC CALENDAR (2023-24)

Events	Odd Semester	Even Semester
Registration (without late fee)	Aug 1, 2023 (Tuesday)	Feb 1, 2024 (Thursday)
Registration with late fee	Aug 10, 2023	February 10, 2024
Last date of adding course	Aug 21, 2023	February 24, 2024
Last date of dropping a course	Sept 11, 2023	March 11, 2024
Mid Semester break	-----	March 25-29, 2024
Mid Sessional Practical examination (in classes) (only for exclusive practical course)	Sept 25-29, 2023	-----
Mid Sessional theory examination (In classes)	Oct 3-12, 2023	April 1-10, 2024
Mid Sessional Practical examination (in classes) (only for exclusive practical course)	-----	April 11-16, 2024
Mid Semester break	Nov 10-15, 2023	-----
Mid-Session reports to the Deans	Nov 11, 2023	April 30, 2024
End Semester Practical Examinations (in classes)	Dec 4-13, 2023	June 6-14, 2024
End Semester Theory Examination (In classes)	Dec 15-23, 2023	June 17-28, 2024
Winter/ Summer breaks (Winter in one slot and summer in two slots of half duration each)	Dec 25, 2023 – Jan 31, 2024	July 1- 30, 2024
Declaration of result	February 03, 2023	August 31, 2024
Semester duration in weeks and days	20 weeks and four days (144 days)	21 weeks and 1 day (148 days)
Semester working days	107	111
Teaching days	100	100

*Eternal University will remain closed on National/State holidays i.e.
January 26, August 15, October 2, and April 15.

**AKAL COLLEGE OF NURSING
ETERNAL UNIVERSITY, BARU SAHIB
ACADEMIC CALENDAR
B.Sc. NURSING – 2023 – 2024 (Semester Pattern)**

Events	Odd Semester	Even Semester
Registration (without late fee)	Aug 1, 2023 (Tuesday)	Feb 1, 2024 (Thursday)
Registration with late fee	Sept 30, 2023	February 10, 2024
1 st Sessional Examination	Sept 11 – 16, 2023	March 11 – 16, 2024
2 nd Sessional Examination	Oct 30 – Nov 4 th , 2023	April 29 – May 4, 2024
Mid Semester Break	Nov 10 – 15, 2023	-----
Preparatory Holidays	Dec 11 – 16, 2023	June 17-22, 2024
End Semester Terminal Examination	Dec 18 - 23, 2023	June 24 – 29, 2024
Winter/ Summer breaks	Dec 25, 2023 – Jan 20, 2024	July 1- 30, 2024
Skill Lab Sessions	Jan 22 – 31, 2024	-----
Declaration of Result	February 03, 2024	August 31, 2024
Semester duration in weeks and days	26 weeks (154 Days)	26 weeks (156 Days)
Semester working days	126	128
Teaching Days including Clinicals	102	104
Day 1 to 1 st Sessional Exam (days)	34	33
1 st Sessional Exam to 2 nd Sessional Exam	35	35
2 nd Sessional Exam to ESTE* (days)	33	36

Eternal University will remain closed on National/State holidays i.e.

January 26, August 15, October 2, and April 15.

*ESTE (End Semester Theory/ Clinical Examination)

**AKAL COLLEGE OF NURSING,
ETERNAL UNIVERSITY, BARU SAHIB
ACADEMIC CALENDAR
M.Sc. NURSING – 2023 – 2024**

Events	Dates
Registration (without late fee)	Aug 1, 2023 (Tuesday)
Registration with late fee	Sept 30, 2023
1 st Sessional Examination	Oct 30 – Nov 4, 2023
1 st Quarterly Break	Nov 10 – 15, 2023
Winter breaks	Dec 25, 2023 – Jan 13, 2024
2 nd Sessional Examination	March 11 – 16, 2024
Preparatory Holidays	July 15 – 20, 2024
End Semester Terminal Examination	July 22 – 27, 2024
Summer breaks	July 29 - 31, 2024
Declaration of Result	August 30, 2024
Semester duration in weeks and days	52 weeks (309 Days)
Semester working days	287
Teaching Days including Clinicals	260
Day 1 to 1 st Sessional Exam (days)	75
1 st Sessional Exam to 2 nd Sessional Exam	84
2 nd Sessional Exam to ESTE* (days)	101

Eternal University will remain closed on National/State holidays i.e.

January 26, August 15, October 2, and April 15.

*ESTE (End Semester Theory/ Clinical Examination)

**ETERNAL UNIVERSITY
SPORTS CALENDAR
FOR THE ACADEMIC SESSION 2023-24**

SPORTS ACTIVITIES		
S. No.	Activities	Dates
1	Cross Country	09 Sep. 2023
2	Badminton	22-23 Sep. 2023
3	Chess & Table Tennis	13-14 Oct. 2023
4	Football	27-28 Oct. 2023
5	Kho-Kho	24-25 Nov. 2023
6	Volleyball	09-10 Feb. 2024
7	Basketball	23-24 Feb. 2024
8	Annual Athletic Meet/ Annual Sports Day	09 March 2024
9	International Yoga Day	21 June 2024

Dates notified in this calendar are subject to be changed due to some unforeseen circumstances in future.

TESTIMONIALS

 <p style="text-align: center;">Sakshi Pundir B.Sc. (Hons.) Agriculture</p>	<p>My self, Sakshi Pundir, student of B.Sc. (Hons.) Agriculture have passed my graduation from Dr. Khem Singh Gill Akal College of Agriculture, Eternal University, Baru Sahib. This is the campus with divine peace; the environment here is so refreshing. This campus provides us the atmosphere that every child needs to focus on their carrier. The faculty members here are very coordinating and helpful. They are always there to guide you in every phase. I feel lucky to be a student of this peaceful university. Through competition I have been able to get admission in M.Sc. Ag. (Agricultural Economics) at CSK HPKV, Palampur and finally in Agricultural Extension Education at Dr. Rajendra Prasad Central University, Samastipur (Bihar) during the Academic Session 2022-2023.</p>
 <p style="text-align: center;">Heena B.Sc. (Hons.) Agriculture</p>	<p>My self, Heena, was a student of B.Sc. (Hons.) Agriculture at Eternal University, Baru Sahib Sirmour since 2018-2022. My four years overall experience is very great and for study purpose this place is very peaceful. I would like to thank all my teachers for their academic support which they provided to each and every student. Through competition I have been able to get admission in M.Sc. Ag. (Vegetable Science) at Sher-e-Kashmir University of Agricultural Sciences and Technology Jammu during the academic session 2022-23.</p>
 <p style="text-align: center;">Jagneet Kaur, Pursuing Ph.D. in Education from Eternal University (2022)</p>	<p>I, Jagneet Kaur pursuing Ph.D. (Education) under ACA&SS college feel so blessed and grateful for being a student of Eternal University which is situated in a beautiful divine place around sprawling hills. I have progress tremendously both personally and professionally. I have recently completed my Masters in Education under Education Department where the entire faculty and department work tirelessly to shape one destiny. This college has highly qualified faculty and they taught us in a way by keeping in mind the level of students. Teachers are very supportive and kind. This institute is a very good platform for learning and career development. A beautiful and a spiritual campus, lectures with interesting insights, focus on individual development so essential in today's time, all of these have truly been so fruitful to me that I qualified UGC NET-JRF Exam with the help of Dr. Raino Bhatia and other esteemed faculty who inspired me to reach to this greatest success of 2022 year. This place is not only sharpened me in subjective knowledge but also taught me the basic ethics of life which are very important for success in every individual's life. So, I would like to suggest others to be a part of this beautiful place to take the golden opportunity of your life.</p>

 <p>Sandeep Kaur, B.Sc. (Hons.) Psychology, (2019-22)</p>	<p>It is believed that a person's life is moulded at the early 20s and it is very important to be at the right place. In that case, I am glad that Eternal University happened to me. Academic excellence along with the overall growth of the person is what the college aims at. The college has always provided the best of facilities and also has an education-friendly environment. Now, I am pursuing master degree from SGT University, Gurugram.</p>
 <p>Diksha Chauhan (M.Sc. Physics)</p>	<p>It wasn't my first choice to come to the Eternal University Baru Sahib. I accidentally stumbled upon this university and I am glad I came here to pursue my M.Sc. in Physics. My first visit left me awestruck after looking at the atmosphere of the college. It's only been two years since I am here but I have created memories which I will cherish all of my life. It is first and the best India's northern girl's university which offers education in different streams and discipline. The university has the peaceful and very secure environment here. It is provided with the best hostel and university facilities here. The campus is filled with the positive energy and exuberance. It has the best teachers who guided and boosted to face the competitive world with confidence. I am very thankful to the faculty that keeps me the knowledge and confidence and has brought new dimension into my life to achieve a successful career. This university helps me to convert my endure into real time world. The campus is full of limitless opportunities. I will strongly recommend anyone to come to Eternal University as it is one of the best universities of Himachal Pradesh.</p>
 <p>Simranjeet Kaur (Ph.D. Scholar, Zoology)</p>	<p>Eternal University has the most inspiring, cleanest campus full of positivity and spiritualaura. The university prepares you to survive every eventuality of life. I joined Eternal University for my master's program in 2016 as a naïve undergraduate, uncertain about my interest in research. After taking admission in the Department of Zoology, I was instilled with paramount knowledge and got to know the true meaning of research. After completion of my masters in 2018, I got the opportunity to work as a Junior Research Fellow in the DST sponsored project in the Department of Zoology. The university believes in overall skill development with the unified mix of academics and extracurricular activities. The professors are dedicated experts in their respective fields and provide immense knowledge, constant support, guidance and genuine care. Presently I am a doctoral candidate in the Department of Zoology, working on the development of Biological Control for insect pest using indigenous Entomopathogenic Nematodes which will serve as an alternative for harmful chemical pesticides. I am also availing the prestigious INSPIRE fellowship for PhD from Department of Science and Technology, Govt. of India. The university and its ennobling influence of spiritual surroundings have nurtured my intellectual growth, aspirations and contributed to my overall development as person.</p>

 <p>Sukhmanpreet Kaur</p>	<p>Myself Sukhmanpreet Kaur, a pass out B. Com (Hons.) student 2022 batch from Eternal University and currently I am doing M. Com. from Punjab. I can never forget the contribution of our Commerce Department. My faculty members and the T&P cell towards helping me develop those crucial skills which are required to have a successful student life, not just the technical knowledge, but also the soft skills like adaptable, effective and efficient time management.</p>
 <p>Radhika Vaid</p>	<p>I Radhika Vaidh a student of Eternal University wants to say that I feel blessed that I have joined the University for my studies. I did my B.Sc. (Hons.) Economics and also pursuing M.Sc. in Economics from here. My teachers are very supportive. Also, the atmosphere of the university is very peaceful for the study. The facilities of hostel, library and other infrastructure are very developed. The food provided in the mess is hygienic and delicious.</p>
 <p>Monika Sharma 2022 Batch</p>	<p>It is a place where you can find an amalgamation of learning with values. It gives a generous opportunity as well as support from faculties. My two years at this place were great and a memory to cherish for a lifetime. It was full of learning and grooming oneself. And this gave me an opportunity to become a challenging teacher for whom I would like to be thankful to our great Principal Dr. Raino Bhatia and teachers who encouraged us to explore and guided us in every step.</p>
 <p>Amisha 2022 Batch</p>	<p>It was full of joyful and entertaining experiences, where not only teachers and faculties focused on curricular part but also emphasized on co-curricular activities. I realized that professional experience and education are important for my future goals so I choose this beautiful place for professional degree and learnt so many things from this college. Every member at the college is very supportive and tuition is affordable. In addition, it provides placement to almost every student.</p>
 <p>Sukhjeet Kaur</p>	<p>Eternal University is a place where you can find the combination of technical learning and spiritual rejuvenation. I feel great to be the part of Akal College of Engineering & Technology, Eternal University as it has helped me to grow my career as a Software Engineer in Persistent Systems. The four years of my life in Divine place of Baru Sahib was full of learning and grooming oneself. I would like to thank my professors in Akal College of Engineering & Technology who helped me in every step of these four years.</p>
 <p>Swarleen Bhamra</p>	<p>My bachelor's degree at Akal College of Engineering & Technology in Computer Science Engineering consisted of many projects-based evaluation and faculty connect. The mentors at Eternal University helped us enhance my academic and interpersonal skills. The regular interaction with the Placement team also encouraged me to excel in my interview and developing skills that are required for future use. It is because presently I am working as an engineer in Wipro. I would recommend everyone to be the part of this family.</p>

The facility provides a welcoming environment where students feel comfortable to talk with the instructor and work out their problems. Each member of the faculty made a commitment to the student's upskilling during the pandemic and offered extra support. Many thanks to all the professors who made it simple to comprehend difficult subjects and concepts.



Project Manager at
GenerationSaviour
Organization (NTCP), Mohali
4 - 5 Lakhs Annually

Kanika Gautam (2020-22)

The facility provides a welcoming environment where students feel comfortable to talk with the instructor and work out their problems. Each member of the faculty made a commitment to the student's upskilling during the pandemic and offered extra support. Many thanks to all the professors who made it simple to comprehend difficult subjects and concepts.



Project Manager at
GenerationSaviour
Organization (NTCP), Mohali
4 - 5 Lakhs Annually

Kanika Gautam (2020-22)

My college experience is a beautiful and perfect mingle of joy and hardships. It teaches me to be independent makes me serious about my career and most importantly is the blessing of the Baru Sahib Gurudwara are priceless and I always grateful to my teacher as my mentor, they are my inspiration and



Mrs. Prathiba, M.Sc.(N) 2021

Akal college of nursing is one of the best institute in imparting the knowledge, skills, morality, development of personality and enthusiasm for learning by organising international conferences, workshop, webinars and health camp's. College provides 100% placements in various multi-speciality hospitals. Teachers are very cooperative and knowledgeable. The atmosphere of the valley is providing a source of tranquillity.



Volunteer,
Nursing Officer at
Govt. Hospital,
Jammu & Kashmir

Syed Ruqaya shameem,
B.Sc.(N) 2022

MoUs WITH OTHER INSTITUTIONS/ORGANIZATIONS

Sr. No.	Name of the Institute/ organizations
1	Akal University, Talwandi Sabo, Bathinda, Punjab
2	Bhai Pheru Sikh Educational Society, Faridkot, Punjab
3	Bialystok University of Technology, Poland
4	CCS Haryana Agriculture University, Hisar
5	Central University of Himachal Pradesh
6	CSKHPKV (Chaudhary Sarwan Kumar Himachal Pradesh Krishi Vishwavidyalaya) Palampur, H.P.
7	Drexel University, College of Nursing and Applied Sciences, Philadelphia, USA & Texas Woman's University, USA
8	Global Group of Institutes, Amritsar
9	Global Institutes, Amritsar, Punjab
10	Gujarat Institute of Solar Energy, Gandhinagar
11	Indian Agricultural Research Institute, Shimla
12	IQBRI telecom Pvt. Ltd.
13	Jivo Wellness Pvt.Ltd.
14	Kansas State University, Manhattan, Kansas, USA
15	Mahatma Gandhi National Council of Rural Education (MGNCRE), Hyderabad
16	National Institute of Education and Research (NICER)-Under Master plan of Swatch Abhiyan
17	NIT Hamirpur, Himachal Pradesh
18	NSDL Database Management Limited, Mumbai
19	Poornima University, Jaipur, Rajasthan
20	Punjab Agricultural University, Ludhiana
21	Regenesys Business School, Johannesburg, South Africa
22	Regional cum facilitation Centre (RCFC NRNR-1) Mandi, Jogindernagar
23	Reliance Jio Infocom Limited, Navi Mumbai, India
24	Shodhganga/Shodhgangotri-regd.
25	Shoolini University, Himachal Pradesh
26	Sobudh Foundation (A non-profit Section-8 Company)
27	Sri Guru Granth Sahib World University, Fatehgarh Sahib, Punjab
28	Syngenta Biosciences Pvt. Ltd., Goa
29	The Association of Commonwealth Universities
30	University of California, Riverside and San Diego, USA
31	Veterinary Biological Research Institute (VBRI)
32	Wayne State University, College of Engineering, Detroit MI, USA
33	ARTRAC, Shimla for admission to military serving & retired personnel

ADMISSION PROCEDURE

Admission Opens: The admission in the Eternal University for all UG/PG/Doctorate courses opens on 01st January each year i.e. immediately after getting the course approval from HP-PERC Shimla.

Procedure: The student desiring to get admission may contact the university admission cell through email admissions@etenaluniversity.edu.in or Whatsapp mobile numbers **8210258484/7833911763/9816400624/9816640660**.

Seat Booking: A student may book her seat in an approved course with a payment of minimum amount of Rs. 1500/-. The mode of payment may be online or by cash in the following account:

Account Holder: Eternal University
Account No.: 30957030400
Banker's Name & Branch: SBI, Baru Sahib (HP)
IFSC Code: SBIN0011784

Seat Reservation: As per state policy, the percentage of reservation for SC-22%, ST-5%, OBC-15%, EWS-10% and PWD-3%.

Documents for seat booking: Initially the following documents are mandatory for submission to the Admission Cell on the email or WhatsApp's mobile numbers as given in Para 2 above:

- Scanned copy of matriculation Certificate
- Marks proof in the last qualifying Examination/pre final semester mark's sheet
- Student's and Parents' mobile Telephone No. along with e-mail address
- Proof of payment

Seat Confirmation: Admission cell will inform the student for the confirmation of her desired seat after screening the above documents.

Entrance Test: The entrance test will be fixed by the university for some of the courses likewise B.Sc. (Hons.) Agriculture, B.Tech. Food Technology, B.Sc. Nursing and all the doctorate courses. Admission cell will inform the schedule of entrance test. Minimum qualifying marks for the entrance test will be 50%.

Final Admission: Once the student gets confirmation from the admission cell, she will submit the admission form along with all the relevant documents as per check list either in person or through online mode. The admission form, document check list and the specimens of relevant document are available on the university web site from where the student may download and upload duly filled in and scanned admission form.

Fee Payment: The student is to make minimum 50% of total fee package at the time of submission of her documents for admission. Fee may be paid by cash/online in the account given above in Para 3. Student may contact Account Section on the No. 9805098725 for the fee query, if desired.

Registration Number: Registrar Office will issue the Registration Number to the student who has been found eligible as per the laid down eligibility criteria and receipt of remaining balance fee from the student. Registration number will not be issued to the students having compartment in her last qualifying examination and not paid the fee at least 50% of total fee package in advance.

Academic Session: The academic session will start on the date as given in the Academic Calendar which is available on the University website.



2023

AFFIDAVITS UNDERTAKING ADMISSION FORMS

DOCUMENT CHECK LIST

Sr. No	Name of Document	Attached
1	Matriculation Certificates duly self-attested	Yes/No
2	+2 Certificates duly self-attested	Yes/No
3	Diploma DMCs duly self-attested (For B Tech Lateral Student only)	Yes/No/NA
4	Diploma Certificate duly self-attested (For B Tech Lateral Student only)	Yes/No/NA
5	Graduation DMCs duly self-attested (For Postgraduate Students only)	Yes/No/NA
6	Graduation Degree duly self-attested (For Postgraduate Students only)	Yes/No/NA
7	JEE/GATE/CMAT/HPTU Exam Score Card duly self-attested (For B. Tech, M. Tech & MBA Students only)	Yes/No/NA
8	Original Migration Certificate from last Education Institution	Yes/No/NA
9	Original Character Certificate from last Education Institution	Yes/No/NA
10	Original Medical Certificate by an MBBS Doctor	Yes/No/NA
11	Aadhar Card (Self & Parents)	Yes/No
12	Cast Certificate (SC/ST/OBC)	Yes/No/NA
13	HP Bonafide Certificate (For HP Students only)	Yes/No/NA
14	5xPhotographs (Student-2 and 2 each of Mother & Father and one of the Guardian)	Yes/No
15	Anti-Ragging Certificate	Yes/No/NA
16	An undertaking by the student & parent/guardian with reference to UGC Anti-ragging Regulation 2009	Yes/No/NA
17	Hostel Application	Yes/No/NA
18	Indemnity Bond by the Parents/Guardian as per Prospectus (On judicial stamp paper of Rs. 10/- or above)	Yes/No/NA
19.	Gap Affidavit, if applicable(On judicial stamp paper of Rs. 10/- or above)	Yes/No/NA
20	Undertaking for Provisional Admission, if applicable	Yes/No/NA
21	Identity proof of Defence Personnel either serving or retired in/from Army/Air Force/Navy (only applicable for the wards of Defence personnel)	Yes/No/NA
22	NOC from respective Dean/Principal for EU/KTS serving faculty/staff applying for getting admission in Ph.D. Programme	Yes/No/NA
23	NOC from concerned State Department for the Government employees who are getting admission in Ph.D. programme	Yes/No/NA
24	Disability Certificate, if applicable	Yes/No/NA
("NA" stands for "Not Applicable")		

MEDICAL CERTIFICATE OF FITNESS

(TO BE ISSUED ON A LETTER HEAD PAPER)

I, Dr. _____ (Name of Doctor) have medically examined
Shri/ Kumari/ Smt _____ Son/Daughter/Ward of
Shri _____ aged _____ Years, resident of
Village _____ Post Office _____
Tehsil _____ District _____ State _____
(Pin _____) on _____ (Date) and hereby certify that,
he/she is free from deafness, defective vision (including vision) or any other
infirmity, mental or physical, likely to interfere with the efficiency of
his/her work and found him/her FIT possessing good health.

This certificate is only issued for the purpose of higher studies and to take
admission in any of the College/University in India.

This certificate is valid for a period of one year from the date of issuance.

Signature of the Candidate

(To be signed in presence of the Medical Officer)

Signature of the Medical Officer _____

Name of the Medical Officer: Dr. _____

Registration Number _____

Dated:

(Seal)

NOTE

Medical Certificate granted by a qualified medical practitioner holding at
least M.B.B.S. Degree and registered with Medical Council of India, shall
be valid.

RAGGING UNDERTAKING BY THE STUDENT AND THE GUARDIAN

With reference to HP Educational Institutions (Prohibition of Ragging) Ordinance No. 1 of 2009

As per the Supreme Court judgment in Vishwa Jagriti Mission vs. Central Government and Others (2001) 6 SCC 577, ragging is a cognizable offence and is strictly prohibited. If any incident of ragging comes to the notice of the university, the concerned student shall be given liberty to explain and if his/her explanation is not found satisfactory, the University will expel her/him from the relevant program as well as the campus.

As per the Himachal Pradesh Educational Institutions (Prohibition of Ragging) ordinance '2009, "Ragging" "means any act, conduct or practice by which dominant power of senior students, former students or outsiders, is brought to bear on students freshly enrolled or students who are in any way considered junior by other students and includes individual or collective acts or practices which-

1. involve physical or psychological assault or threat or use of force or wrongful confinement or restraint; or
2. violate the status, dignity and honour of such students; or
3. expose students to ridicule and contempt and affect their self-esteem; or
4. Entail verbal abuse and aggression, indecent gesture and obscene behavior.

Prohibition of Ragging

1. No person shall practice ragging in any form, within or outside the premises of an educational institution.
2. Any person who indulged in ragging, on conviction, be punished with imprisonment for a term which may extend to fifty thousand rupees or both.

Checking and reporting of incidents of Ragging

1. The University is bound to take immediate action on the occurrence of any incident of ragging. The concerned officer-in-charge will make a report to this effect to the Vice-Chancellor at the earliest.
2. Every single incident of ragging where the victim or his/her parents or guardian or the Head of educational institutions is not satisfied with the institutional arrangement for action, a First Information Report (FIR) shall be filed without exception by the institutional authorities with the local police authorities.
3. Any failure on the part of institutional authority or negligence or deliberate delay in lodging the First Information Report with the local police shall be constructed to be an act of culpable negligence on the part of the institutional authority.
4. If any victim or his/her parents or guardian intends to file First Information Report directly with the police that shall not absolve the institutional authority from the requirement of filing the First Information Report.

5. Any person found negligent in taking action/ or shall, on conviction, be punished with imprisonment for a term which may extend to one year or a fine which may extend to ten thousand rupees, or with both.

Offences to be cognizable, non-bailable or compoundable

6. Every offence under this ordinance shall be cognizable, non-bailable and compoundable with the permission of the court.
7. (i) Any student convicted of an offence under this ordinance shall be expelled from the educational institution.
(ii) Student expelled on account of ragging shall not be admitted in any other educational institution for a period of three years from the date of order of such expulsion.

Preliminary Enquiry/ Action

8. (i) Whenever any student or, as the case may be, the parents or guardian or a teacher of an educational institution or an officer-in-charge makes a complaint, in writing, of ragging to the head of the educational institution shall, without prejudice to the foregoing provisions, within twenty-four hours of the receipt of the complaint, enquire into it and, if, prima facie, it is found true, suspend the student found guilty.
(ii) Where, on enquiry by the head of educational institution, it is proved that prima facie there is no substance in the complaint received; he shall intimate the fact, in writing, to the complainant.

UNDERTAKING BY THE STUDENT AND GUARDIAN

I have read all the anti-ragging rules as given above in the application form for admission. I am fully aware of the anti-ragging policy of the state of Himachal Pradesh and that of the ruling given by the Honorable Supreme Court of India. I undertake to abide by these rules and regulations to the best of my knowledge and belief. I solemnly affirm that I will not commit any act of ragging on the campus and outside the university. If I fail to do so, on any account, the university may take appropriate action and award any punishment as contemplated above.

Place: Baru Sahib

Date:

(Signature of the Student)

I endorse the undertaking given by my son/ daughter/ward.

Place: Baru Sahib

(Full Signature of Parent/ Guardian)

Date:

Name: _____

Relationship with the student: _____

INDEMNITY BOND

(To be submitted by the Parent/Guardian of Rs. 10/- or above on Non Judicial Stamp Paper)

I, _____ S/o/D/o/W/o _____ have got admitted my Son/Daughter _____ in the programme _____ in the Eternal University and have gone through and understood all the Provisions of Admission Guidelines, Programme Details and Forms for admission to Institutes, Schools, Departments, Divisions, Centers, other constituent units, establishments and facilities including hostels etc. of the Eternal University provided in the Admission Prospectus.

I, hereby indemnify the College/University from and against all proceedings and claims for any or on account of or in relation to any disability, bodily injury (self-inflicted or otherwise), suicide and/or suicide attempt, death, infections and diseases caused by any insect-bites, animal-bites, plant-bites or otherwise (in or outside the campus of the college/university from and against all damages, losses, costs, charges and expenses in respect thereof, in any manner due to any reason, whatsoever, that my son/daughter may suffer during his/her course of study in the College/University, as a day boarder and/or residing in the university hostel. I, hereby indemnify the college/university from and against all the responsibilities for the medical fitness of my son/daughter, at all times and further affirm that he/she has no communicable and serious diseases like that of fits, any sort of attacks or likewise or any kind of psychiatric problems like mental trauma or depression or any other sort of problem.

I, hereby indemnify the college/university from and against all the responsibilities, liabilities and legal implications of any law of the land for the time being in force or otherwise, in any manner; in case of my son/daughter possessing, using or dealing with any kind of intoxicating material including alcohol, drugs of any kind, gutka, tobacco, cigarettes or any other sedative materials; and, in case of my son/daughter possessing, using or dealing or abetting the use of any kind of weapons including sticks, rods, explosives, firework or any such material.

I, hereby indemnify the College/University from and against all the criminal proceedings and/or any legal case or dispute against my son/daughter. I understand and agree that in case of any legal implications or proceedings against him/her today and in future, he/she himself/herself and/or I, myself, shall assume all the responsibilities, liabilities and legal implications of any law of the land for the time being in force or otherwise; and the college/university shall not be liable for that, in any manner.

I, am giving this Indemnity Bond to the college/university with full understanding that the College/University will at all times, in no way, be liable for any action, right or claim or compensation or any legal implication in any forum, organization or any kind of court on any account, at request by myself, my son/daughter, my dependents, next of kin or other legal representatives; and legal disputes, if any, will be subject to the jurisdiction of the Courts in Sirmour district.

Address:

Place: Baru Sahib

Date:

Full Signature of Parent / Guardian

Name: _____

Relationship with Student: _____

Telephone No. _____

AFFIDAVIT FOR GAP PERIOD

(To be submitted by the Student of Rs. 10/- or above on Non Judicial Stamp Paper)

I, _____ S/D/O _____ resident of _____, aged _____ years

do hereby solemnly affirm and declare as under:

1. That I have passed _____ Examination from _____ in the year _____.
2. That I could not seek admission in any institution/college/University during the Gap period from _____ to _____ due to _____
3. That I have not been debarred by any educational institution/university during the gap period.
4. That there is no any criminal/civil/complaint/case pending in any of the court of law and Police station against me during the above mentioned gap period.
5. That I bear a good moral good character.

(Deponent)

VERIFICATION

I, the above named deponent do hereby further verify that the comments of this affidavit of mine are true and correct to the best of my knowledge and belief. No part of it is false and nothing has been concealed therefrom.

Verified at _____ on this day _____ Month _____ Year _____

(Deponent)

APPLICATION FOR HOSTEL FACILITIES

To

The Dean Students Welfare
Eternal University
Baru Sahib (HP)

Affix your
passport size
photograph

Sir/Madam,

I, _____ S/D/O _____ had registered my name for the admission in _____ Course to be run by the Eternal University during the Academic Session _____. I desire to reside in the University Hostel till the completion of my course.

I submit my relevant details as under:

1. Residential Address

Permanent Home Address:	Correspondence Address (If any):
Village/City: _____	Village/City: _____
Post Office: _____	Post Office: _____
Police Station: _____	Police Station: _____
Tehsil: _____	Tehsil: _____
District: _____	District: _____
State: _____	State: _____
Pin Code: _____	Pin Code: _____

2. Contact Numbers in case of any emergency:

i. Self _____ ii. Father _____
iii. Mother _____ iv. Guardian _____

Kindly allot me a suitable hostel accommodation for the period of my study. I am enclosing an undertaking for the hostel facilities.

Station: Baru Sahib

Date:

Student's Signature

For Official Use

Name of the Hostel: _____ Allotment Status: Confirmed/Awaited/Rejected

Date: _____ Signature & Name of the dealing Official: _____



A.F. No. _____

ADMISSION FORM: ETERNAL UNIVERSITY

(To be filled by Candidate in his/her own Hand)

Course Applied for: _____

Important Instructions:

1. Please read the prospectus carefully before filling each column of the Admission form.
2. *No column of the Admission Form will be left blank. Write N.A. if not applicable.
3. *Incomplete Admission form or without supporting documents, will be rejected.
4. Student will enclose relevant documents duly attested (See Documents Check List)
5. *Admission form is acceptable subject to fulfilling the admission criteria approved by University management.

Affix your
passport size
photo

Student's Sign

**ACCOUNT HOLDER: ETERNAL UNIVERSITY, BANK : SBI, BARU SAHIB (HP)
ACCOUNT NO : 30957030400, IFSC CODE: SBIN0011784****PERSONAL DATA**

1. Name of the Student in Block Letters (As per Matric Certificate) _____
2. Father's Name in Block Letters (As per Matric Certificate) _____
3. Mother's Name in Block Letters (As per Matric Certificate) _____
4. Name of the Husband/wife (If married) _____
5. Name of Guardian with Relationship: _____
6. Father's Occupation: _____ 7. Family Monthly Income: _____
8. Date of Birth (As per Matric Certificate) _____ 9. Aadhar Card No. : _____
10. Gender: Male/Female 11. Nationality: _____ 12. Religion: _____
13. Social Category: General/SC/ST/OBC 14. Persons with disability (PWD): Yes/No (if yes, _____%)
15. Outstanding Sportsman: Yes/No (if yes, Name of the Game _____)
16. Whether a Domicile of H.P.: Yes/No 17. Marital Status: Married/Unmarried
18. Marks/Rank Obtained in JEE/GATE/CMAT/HPTU Exam: _____
(Also write down your Registration/Roll Number)

19. Permanent/Postal Home Address:

Village/House No.: _____ Post Office: _____

Police Station: _____ Tehsil: _____

District: _____ State: _____ Pin Code: _____

20. Contact No.: i. Student _____ ii. Parents _____

21. e-mail ID: _____ 22. Gap in Study: Yes/No (if yes, _____ years)

23. Are you willing for Day Boarding with your own transport arrangements? Yes/No

24. Fee Deposited (Bankers details given above):

Amount deposited: _____ Date: _____ Mode of Payment: RTGS/NEFT/Cheque/Cash

Bank Name & address: _____ Bank reference (if deposited online) _____

25. Education Qualification Details:

Exam Passed	Year of Passing	School/College	Board/University	% of marks obtained	Proof enclosed (Yes/No)
Matric or equivalent					
+2 or equivalent					
Diploma					
B.A./B.Sc./B.Com./B.Tech.					
M.A./M.Sc./M.Com./M.Tech./MBA					
Any other qualification					

26. **Details of Experience** (Experience in Nursing from Educational Institution/Hospital (100 Bed) recognized by the Indian Nursing Council/respective State/Central Government.)

(Applicable to candidates working in private hospitals and applying for M.Sc. Nursing Course)

Post Held	Institution/Hospital with minimum 100 beds	Period/Date		Total Experience		
		From	To	Years	Months	Days

i. Whether presently in service: Yes/No

ii. Name & address of present Employer (if in service): _____

27. Declaration by the applicant and the Parent/Guardian:

- I declare that the entries made by me in the form are correct to the best of my knowledge and nothing substantial has been concealed therein. I am conscious that if any of the entries are found to be incorrect or substantial facts concealed, my admission is liable to be cancelled.
- I hold myself responsible for payment of fee and other dues on the dates according to the scheduled given by the Management of University from time to time.
- I shall fulfill the attendance requirements as per the University Rules failing which I shall have no claim to appear in the examination.

Date: _____

Signature of the Student

Signature of the Parents/Guardian

FOR OFFICE USE ONLY

Accounts Branch: Amount received _____ (%) Amount pending _____ Sign _____

Dean Students Welfare: Accommodation allotted/kept reserve: Yes/No Signature: _____

Registrar Office: The student is found **ELIGIBLE/NOT ELIGIBLE** for the admission in _____

(Director Admission)

(Concerned Dean/HOD)

(Registrar/Additional Registrar)

HP-PERC NOTICE

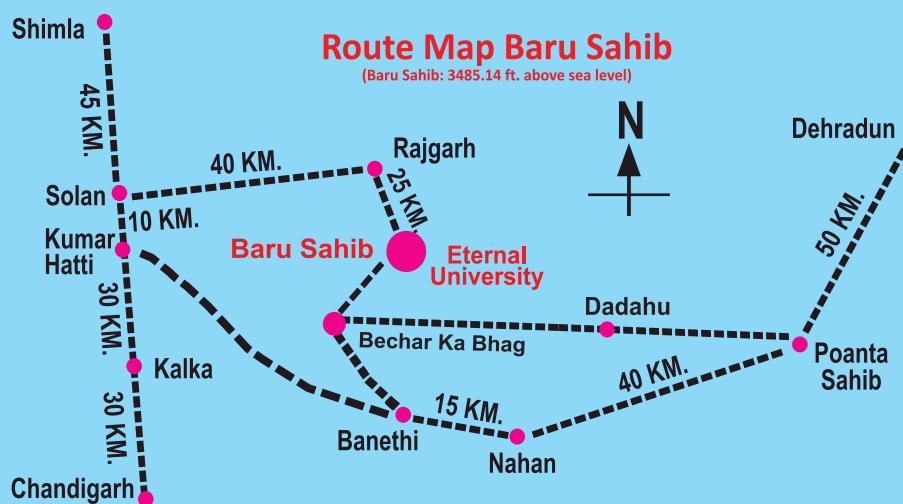
NOTICE

It is mandatory under the HIMACHAL PRADESH PRIVATE EDUCATIONAL INSTITUTIONS (REGULATORY COMMISSION) ACT, 2010 that all the Private Higher Educational Institutions including Universities and Colleges in the State shall offer approved courses, make admissions on merit, charge fees as approved by the State Govt., conduct fair examination/ evaluation and adhere to the relevant regulatory body norms regarding faculty and infrastructure.

Any violation of the norms by the private educational Institutions will attract penal provisions under section 11 of the Act *ibid*.

For grievance complains concerning any academic or administrative lapse(s), such as overcharging of fees, admission in contravention of norms, malpractices in teaching and examinations, and deficiencies in faculty and infrastructure please contact the Secretary/ Public Grievance officer HP-PERS at the above address through email/fax/by post along with relevant supporting documents, if any for taking necessary action.

By order
CHAIRMAN



ETERNAL UNIVERSITY

BARU SAHIB (HIMACHAL PRADESH)

NAAC ACCREDITED Recognized by UGC, AICTE, INC, NCTE, NAAC

9816640660, 9816400624, 7833911763, 9916441458, (Nursing), 01799-276012
E-mail: admissions@eternaluniversity.edu.in, Contact@eternaluniversity.edu.in